






12 Atkinson Close Glenmore Park NSW

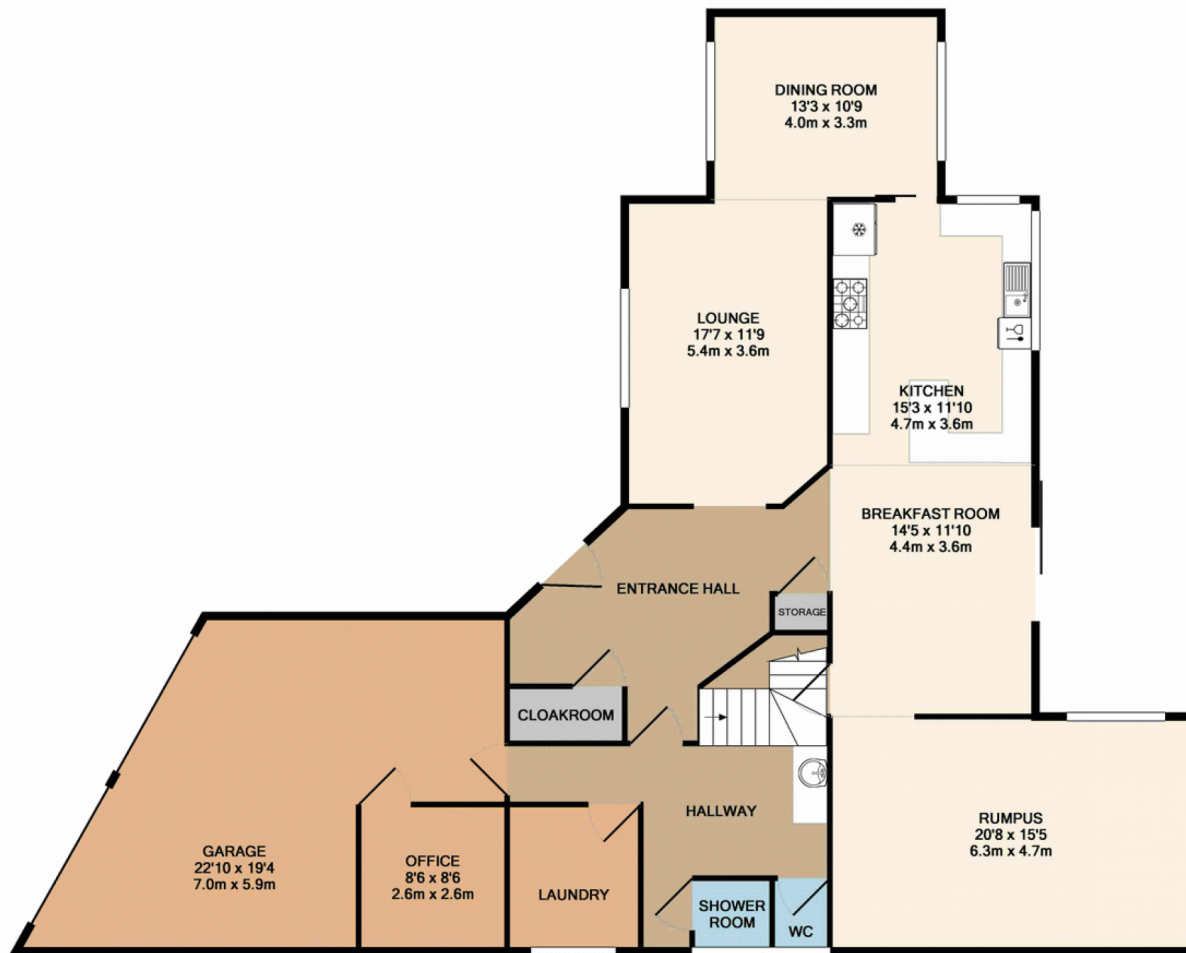
4  3  4 

Proudly positioned at the top of a quiet cul-de-sac with Blue Mountains vistas this stunning one off design is sure to impress. This exceptional family home provides space and comfort in a sought-after location close to Mulgoa Road and the M4. Showcasing a host of quality finishes and inclusions over two expansive levels this property offers one of the most complete packages on the market in Glenmore Park today.

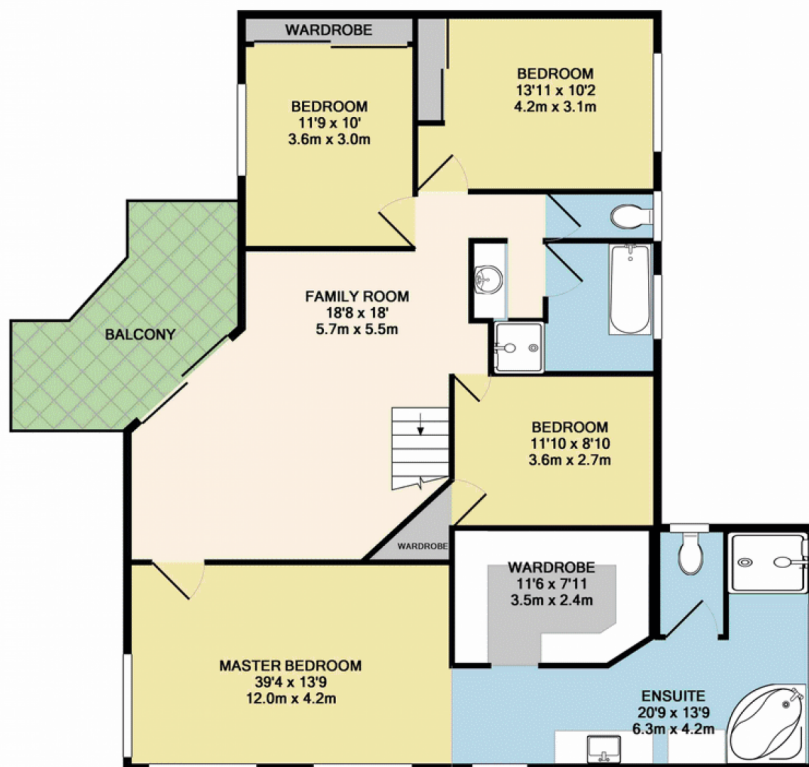
- * Spacious formal areas including sunken lounge
- * Casual meals, upstairs living & separate rumpus
- * Recently renovated gourmet kitchen
- * Excellent flow from indoor living to outdoor pergola
- * Generous size bedrooms with built-ins
- * Huge master bedroom + walk-in robe & ensuite

Type : House
Land Size : 760 sqm
View : <https://www.aitkenre.com.au/8061805>

[For full version visit the website](https://www.aitkenre.com.au)



GROUND FLOOR
APPROX. FLOOR
AREA 1874 SQ.FT.
(174.1 SQ.M.)



1ST FLOOR
APPROX. FLOOR
AREA 1303 SQ.FT.
(121.1 SQ.M.)

TOTAL APPROX. FLOOR AREA 3177 SQ.FT. (295.1 SQ.M.)

Whilst every attempt has been made to ensure the accuracy of the floor plan contained here, measurements of doors, windows, rooms and any other items are approximate and no responsibility is taken for any error, omission, or mis-statement. This plan is for illustrative purposes only and should be used as such by any prospective purchaser. The services, systems and appliances shown have not been tested and no guarantee as to their operability or efficiency can be given

Made with Metropix ©2017