






2-6 Grays Lane Cranebrook NSW

5  2  2 

Grahaem + Dan are proud to present this exquisite residence set on 3 lush acres

Acreage blocks close to all that Penrith has to offer continue to be hot property as buyers look to make a lifestyle change. This beautifully located home is situated on (approx) 3 acres on one of Cranebrook's most sought after streets. This property is ideal for first home buyers, owner occupiers and tradies alike with its ample space for large sheds and more (STCA). This property offers a wealth of opportunity and potential.

Key features:

- Cranebrook Village 2km approx
- Henry Fulton Primary School 350m approx

Type : Acreage/Semi-Rural
Price : \$ 2,050,000
Land Size : 1.25 ha
View : <https://www.aitkenre.com.au/8061347>



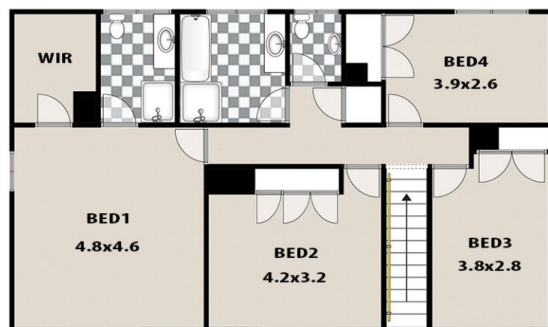
Grahaem Evans
02 4773 9511



Daniel Hulston
02 4732 5055

[For full version visit the website](https://www.aitkenre.com.au)

LEGEND



FIRST FLOOR



GROUND FLOOR

2/6 GRAYS LANE, CRANEBROOK

This floor plan and/or site plan is an approximation for illustration purposes only.
All measurements are approximate and not guaranteed to be exact or to scale.
Interested parties should confirm measurements by their own means.

