



## 25 Panorama Avenue Leonay NSW

3  1  2 

Team Hulston are proud to present this wonderful entry level home in the tightly held suburb of Leonay.

Nestled high and situated on 657sqm of land, the opportunity exists to just move in, upgrade or knock down and build your dream home.

The home, though dated has been well kept and features 3 bedrooms, 2 with BIR's, a large living and a separate dining room. The kitchen has a beautiful outlook and there is also a sunroom and undercover entertaining area.

There is plenty of parking with the long driveway and a double carport. There is also easy access to the backyard making the opportunity for a granny flat(STCA) a possibility

**Type** : House  
**Price** : \$ 862,000  
**Land Size** : 657.6 sqm  
**View** : <https://www.aitkenre.com.au/8061336>

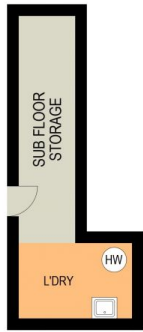


**Daniel Hulston**  
02 4732 5055

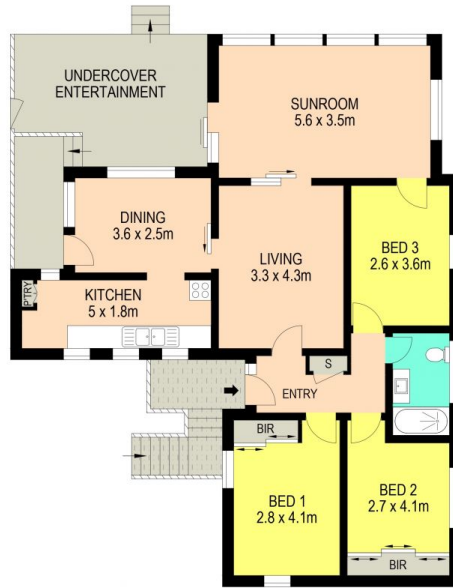


**Trish Mitchell**  
02 4732 5055

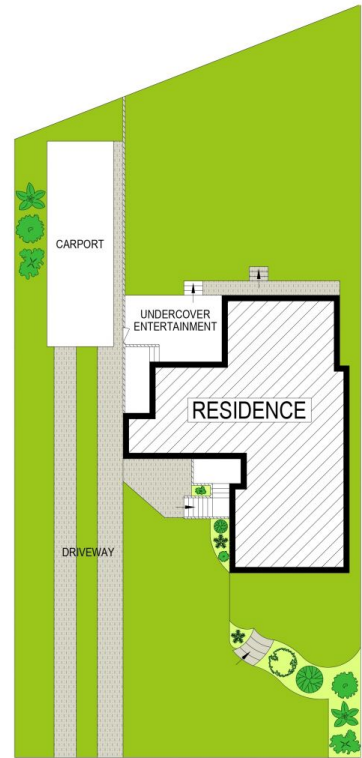
[For full version visit the website](https://www.aitkenre.com.au)



LOWER GROUND LEVEL



UPPER GROUND LEVEL



Disclaimer: The above information has been furnished to us by the vendors of the property, Rpdata Google and independent recourses. We have not verified whether or not the information is accurate and do not have any belief one way or the other in its accuracy. We do not accept any responsibility to any person for its accuracy and do no more than pass it on. All interested parties should make their own inquiries in order to determine whether or not this information is in fact accurate.

25 Panorama Avenue, Leonay

