



### 58 Bottlebrush Drive Cranebrook NSW

3  1  2 

Full of yesteryear character, this home has been loved by the same family since day one. Now we invite you to embrace the character whilst making this home your own through your vision and renovating prowess.

This high set home features 3 bedrooms, great size lounge which overlooks the grass fields opposite and a kitchen with inbuilt dining table.

The carport down the side of the home has a very high roof, great for vehicles with extra height and leads to the 4.7m x 6m workshop.

There is potential for a granny flat also(STCA) and still a decent yard space as the block is approx 645sqm. This is a blank canvas with great bones and is ready for the

**Type** : House  
**Price** : \$ 725,000  
**Land Size** : 645 sqm  
**View** : <https://www.aitkenre.com.au/8061305>

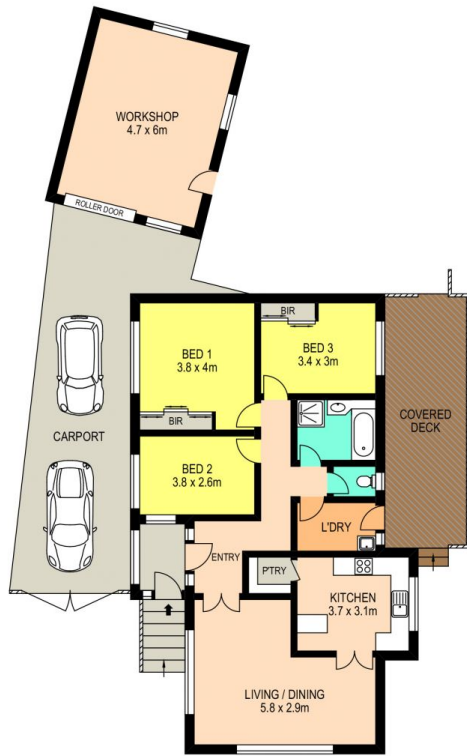


**Daniel Hulston**  
02 4732 5055



**Mitch Paxton**  
02 4732 5055

[For full version visit the website](https://www.aitkenre.com.au)



Disclaimer: The above information has been furnished to us by the vendors of the property, Rpdata Google and independent recourses. We have not verified whether or not the information is accurate and do not have any belief one way or the other in its accuracy. We do not accept any responsibility to any person for its accuracy and do no more than pass it on. All interested parties should make their own inquiries in order to determine whether or not this information is in fact accurate.

58 Bottlebrush Drive, Cranebrook

