



112 Lord Sheffield Circuit Penrith NSW

3  2  2 

Perfectly positioned across from Ron Mulock Oval this immaculately presented property is located within the sought-after Thornton Estate, this three-bedroom home offers a versatile dual level layout. It offers modern interiors and quality inclusions throughout. The property also offers a double garage and is located within the "Thornton Estate" and is just 500m from Penrith Station. It's also just moments from Westfield Penrith, sporting grounds, barbecue facilities and local cafes are all accessible by foot.

- Three good-sized bedrooms, all fitted with built-in wardrobes
- Master bedroom features walk-in robe and ensuite
- Master bedroom features access to balcony with view of

Type : House
Price : \$ 915,000
Land Size : 221 sqm
View : <https://www.aitkenre.com.au/8061265>

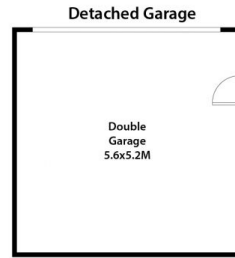
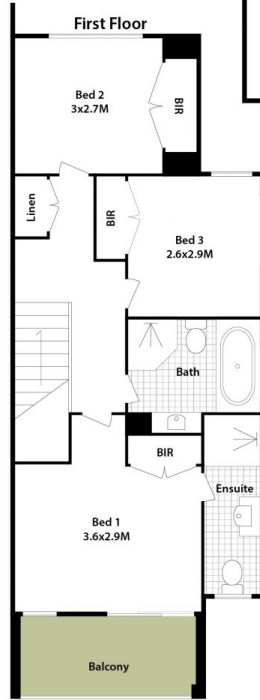
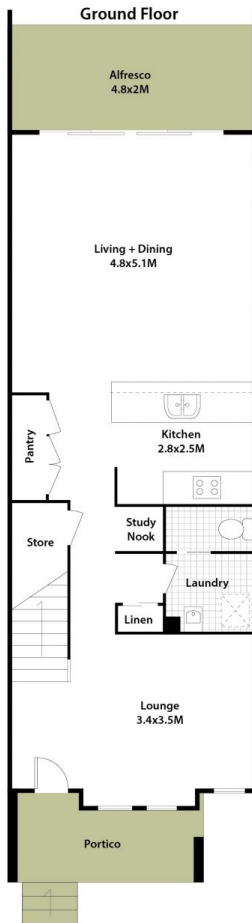


Joey Lustrri
02 4732 5055



Manii Kaur
02 4730 1777

[For full version visit the website](https://www.aitkenre.com.au)



112 Lord Sheffield Cct, Penrith.

DISCLAIMER: All dimensions herein are approximate and gathered from sources believed to be reliable. Whilst every effort is made for the accuracy of our plans, interested parties should rely on their own enquiries.