



6 Worcester Road Cambridge Park NSW

5 🚗 2 🚚 3 🚗

Dan + Mitch are proud to present this large 5 bedroom home in a really quiet location. Upon entry, you are greeted with a sunny entry which leads into the formal lounge and dining room. The 4th bedroom or study is located off the living area. Bedrooms 1 to 3 share a hallway with the updated kitchen and bathroom which leads to the laundry at the rear of the property.

As you walk outside you have an undercover area which leads to the 5th which includes a lounge area and bathroom. It has separate entry to the rest of the home and would make a great private place for a teenager and or for mum and dad.

The lock up garage is nearly 12m long allowing for a workshop at the rear and has drive through access to the massive undercover entertaining area.

Type : House
Price : \$ 831,000
Land Size : 663 sqm
View : <https://www.aitkenre.com.au/8061207>

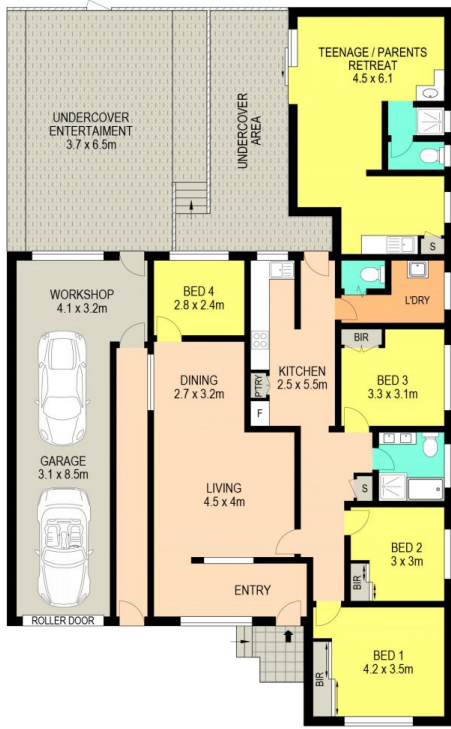


Daniel Hulston
02 4732 5055



Mitch Paxton
02 4732 5055

[For full version visit the website](https://www.aitkenre.com.au)



Disclaimer: The above information has been furnished to us by the vendors of the property, Rpdata Google and independent recourses. We have not verified whether or not the information is accurate and do not have any belief one way or the other in its accuracy. We do not accept any responsibility to any person for its accuracy and do no more than pass it on. All interested parties should make their own inquiries in order to determine whether or not this information is in fact accurate.

6 Worcester Road, Cambridge Park

