



3 Doncaster Avenue Claremont Meadows NSW

4  2  2 

Revealing a chic contemporary design with high-end finishes, a collection of living spaces and private alfresco entertaining, this remarkable family home sits prominent on the high side of the street. It unfolds over a streamlined single-level layout and promotes two-point access to an alfresco deck, landscaped garden and fish pond. The property sits on a spacious 715sqm land parcel and compromises four bedrooms, a study, a sunken media room and a double garage and it is central to Caddens Corner, Western Sydney University, M4 motorway and proposed train connection to Western Sydney Airport.

- Extensive layout incorporates an open family, living and dining space
- Dual outdoor flow to an entertainer's deck, ideal for

Type : House
Price : \$ 1,350,000
Land Size : 715 sqm
View : <https://www.aitkenre.com.au/8061184>

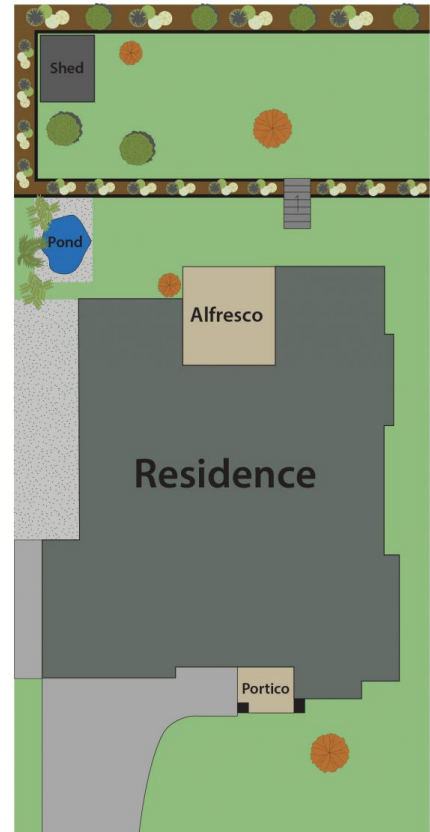


Joey Lustri
02 4732 5055



Matthew Hall
02 4732 5055

[For full version visit the website](https://www.aitkenre.com.au)



3 Doncaster Ave, Claremont Meadows.

DISCLAIMER: All dimensions herein are approximate and gathered from sources believed to be reliable.
Whilst every effort is made for the accuracy of our plans, interested parties should rely on their own enquiries.

