




### 3 Westmont Drive South Penrith NSW

3  1  1 

Situated in a family/friendly location in the popular suburb of South Penrith this immaculately presented home has been kept to a high standard. The property offers a versatile layout that flows out to a very inviting undercover entertaining area. This wonderfully presented home is situated on a spacious 575sqm land parcel. Conveniently located, this property is just moments from Southlands Shopping Centre, quality schools, public transport, local parks and the Penrith CBD.

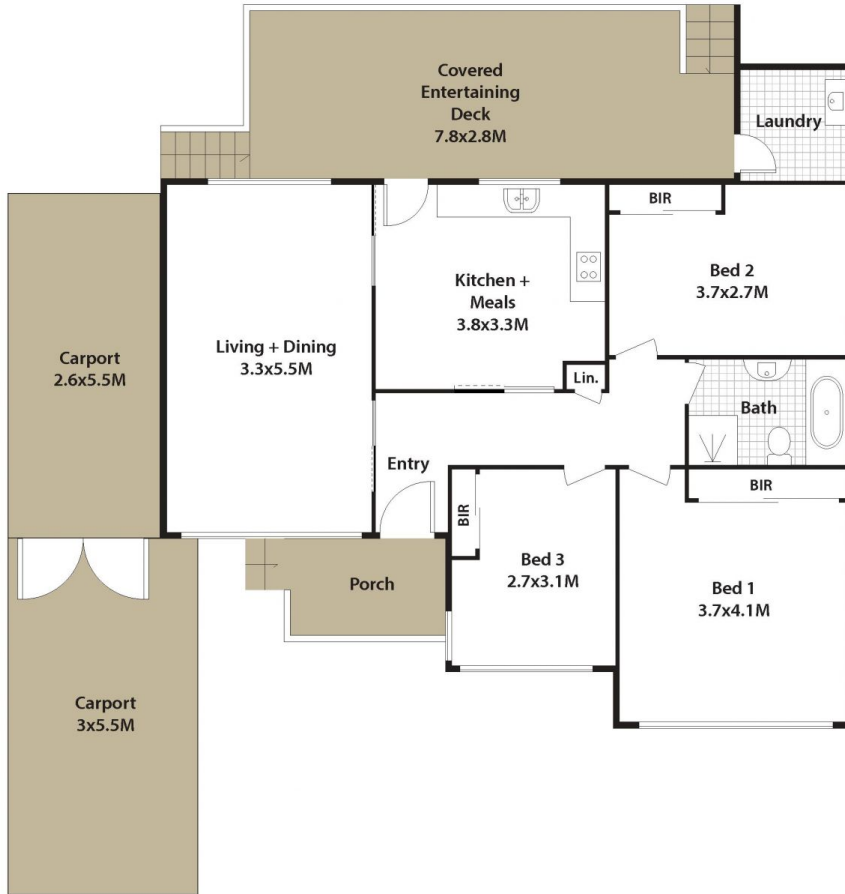
- Three good-sized bedrooms, all fitted with built-in robes
- Distinctive living and dining zones
- Situated in a quiet and high sought-after location
- Spacious 575sqm land parcel, perfect for families and pets

**Type** : House  
**Price** : \$ 820,000  
**Land Size** : 575 sqm  
**View** : <https://www.aitkenre.com.au/8061182>



**Joey Lustrì**  
 02 4732 5055

[For full version visit the website](https://www.aitkenre.com.au)



## 3 Westmont Dr, South Penrith.

DISCLAIMER: All dimensions herein are approximate and gathered from sources believed to be reliable. Whilst every effort is made for the accuracy of our plans, interested parties should rely on their own enquiries.

