



109 Victoria Street Cambridge Park NSW

4  1  2 

Dan + Mitch are proud to present this wonderful throw back home for the first time in a very long time. Occupying 727sqm this land is relatively flat front to back and represents tremendous value and opportunity.

The home is in excellent yet original condition. 10ft ceilings give the home a sense of style and space and it features 4 good sized bedrooms or 3 with a entertainment room, lounge room, kitchen/dining and bathroom. There is a wonderful undercover outdoor room which house a spa and leads to a sunken family/entertainment room.

Outside features a lock up garage, plenty of side access and a large backyard, perfect for a potential granny flat (STCA) or for the kids to explore. Also, there is a second

Type : House
Price : \$ 800,000
Land Size : 727 sqm
View : <https://www.aitkenre.com.au/8061166>

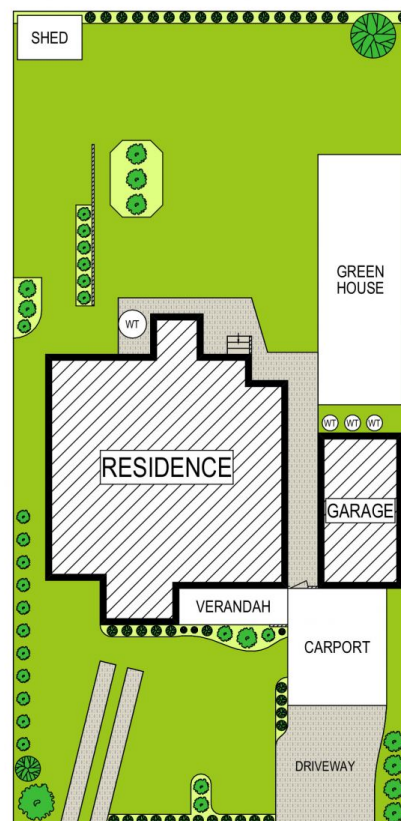


Daniel Hulston
02 4732 5055



Mitch Paxton
02 4732 5055

[For full version visit the website](https://www.aitkenre.com.au)



Disclaimer: The above information has been furnished to us by the vendors of the property, Rpdata Google and independent recourses. We have not verified whether or not the information is accurate and do not have any belief one way or the other in its accuracy. We do not accept any responsibility to any person for its accuracy and do no more than pass it on. All interested parties should make their own inquiries in order to determine whether or not this information is in fact accurate.

109 Victoria Street, Cambridge Park

