



30 Gershwin Crescent Claremont Meadows NSW

3  1  1 

Situated in the highly popular Claremont Meadows, this property has been recently updated to offer easy-care living in a convenient location. This property has a wonderful with its contemporary interiors taking you out to the undercover entertaining area and manicured yard.

It is set in a high-growth pocket of Claremont Meadows, just moments from the park and sports ground, the M4 motorway, Claremont Meadows Public School, Western Sydney University and Caddens Corner Shopping Centre.

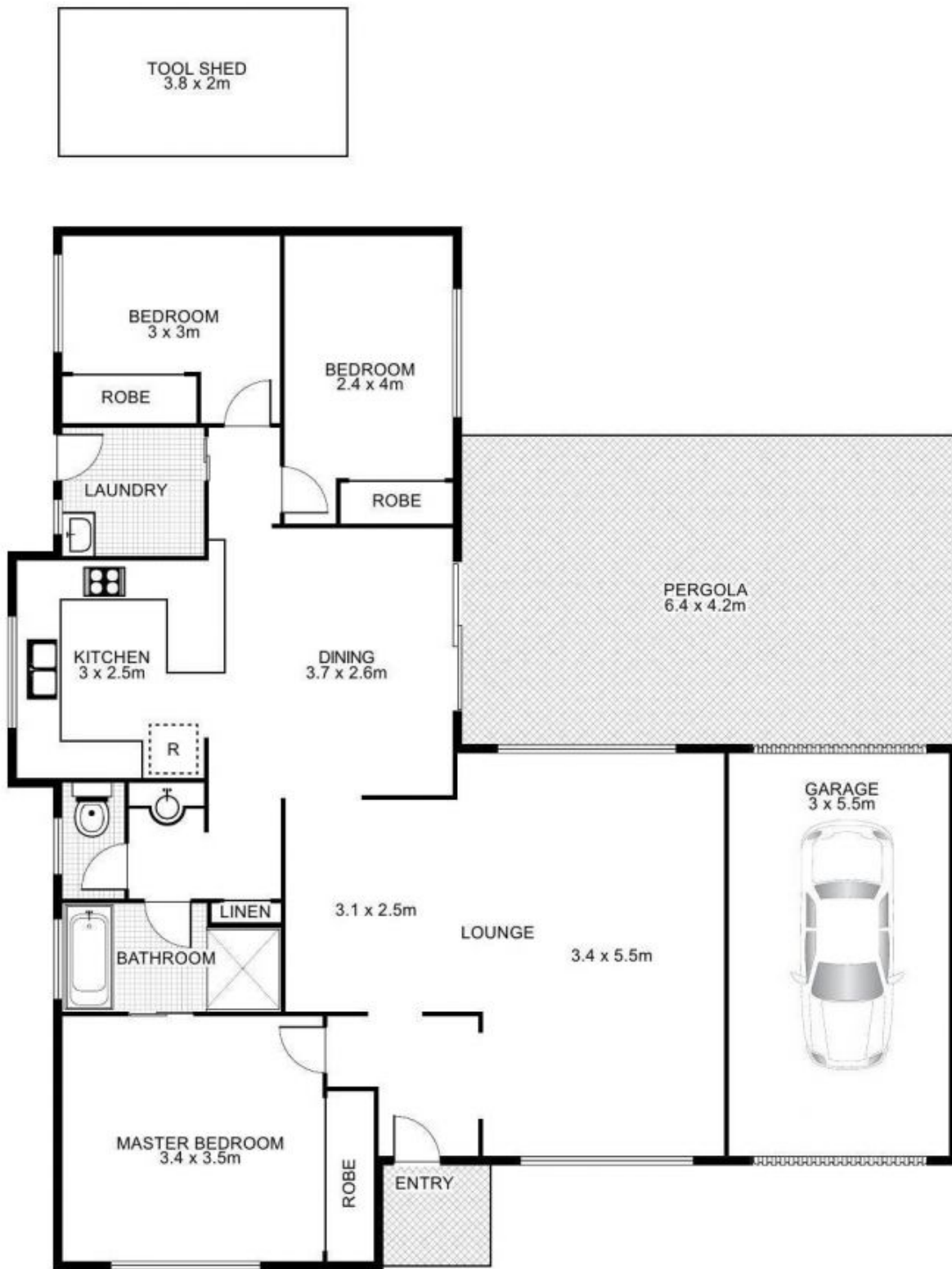
Call Joey Lustri to book your inspection today!

Type : House
Price : \$ 830,000
Land Size : 402 sqm
View : <https://www.aitkenre.com.au/8061164>



Joey Lustri
 02 4732 5055

30 Gershwin Crescent, CLAREMONT MEADOWS



This floor plan is intended as a guide only. Layout dimensions are approximate only. No representations or warranties of any nature whatsoever are given or intended. Any person using this information should rely on their own enquiries



NORTH