



**6 NARELLE Place SILVERDALE NSW**

4  3  4 

Showcasing affordable acreage living, ultimate privacy and a quality build, this spacious Masterton home is washed with abundant natural light and offers multiple living spaces, easy indoor/outdoor entertaining and traditional design.

It is set within a highly sought-after cul-de-sac location, close to everyday amenities, local schools and village shops.

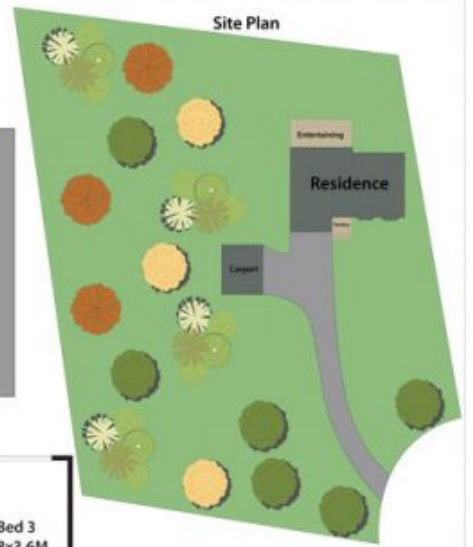
- Living/rumpus with a wet bar, combined lounge/dining
- Expansive all-weather terrace is ideal for entertaining
- Rolling park-like yard with established gardens and trees
- Kitchen with quality appliances, breakfast bar, meals area
- Four good-sized bedrooms each fitted with built-in robes
- Main bathroom with corner spa, master ensuite, guest w/c

**Type** : House  
**Land Size** : 4739 sqm  
**View** : <https://www.aitkenre.com.au/8061026>

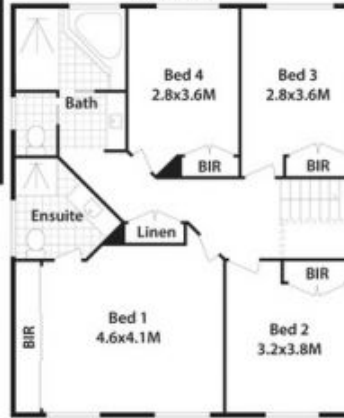
[For full version visit the website](https://www.aitkenre.com.au/8061026)



### Ground Floor



### First Floor



## 6 Narelle Pl, Silverdale.

DISCLAIMER: All dimensions herein are approximate and gathered from sources believed to be reliable. Whilst every effort is made for the accuracy of our plans, interested parties should rely on their own enquiries.

