

21 Heaton Avenue CLAREMONT MEADOWS NSW

4 3 2

Enviably located in one of the most exclusive streets in Claremont Meadows, this flawless family residence basks in an abundance of natural light and offers a streamlined, dual-level design with multiple lounge, dining and entertaining zones. The interiors feature high-quality, modern inclusions whilst the private backyard enjoys a tranquil leafy setting.

It is set on an impressive 555sqm land parcel and is just moments from the M4 motorway, Claremont Meadows Public School, Western Sydney University and the vibrant new dining precinct at Caddens Corner.

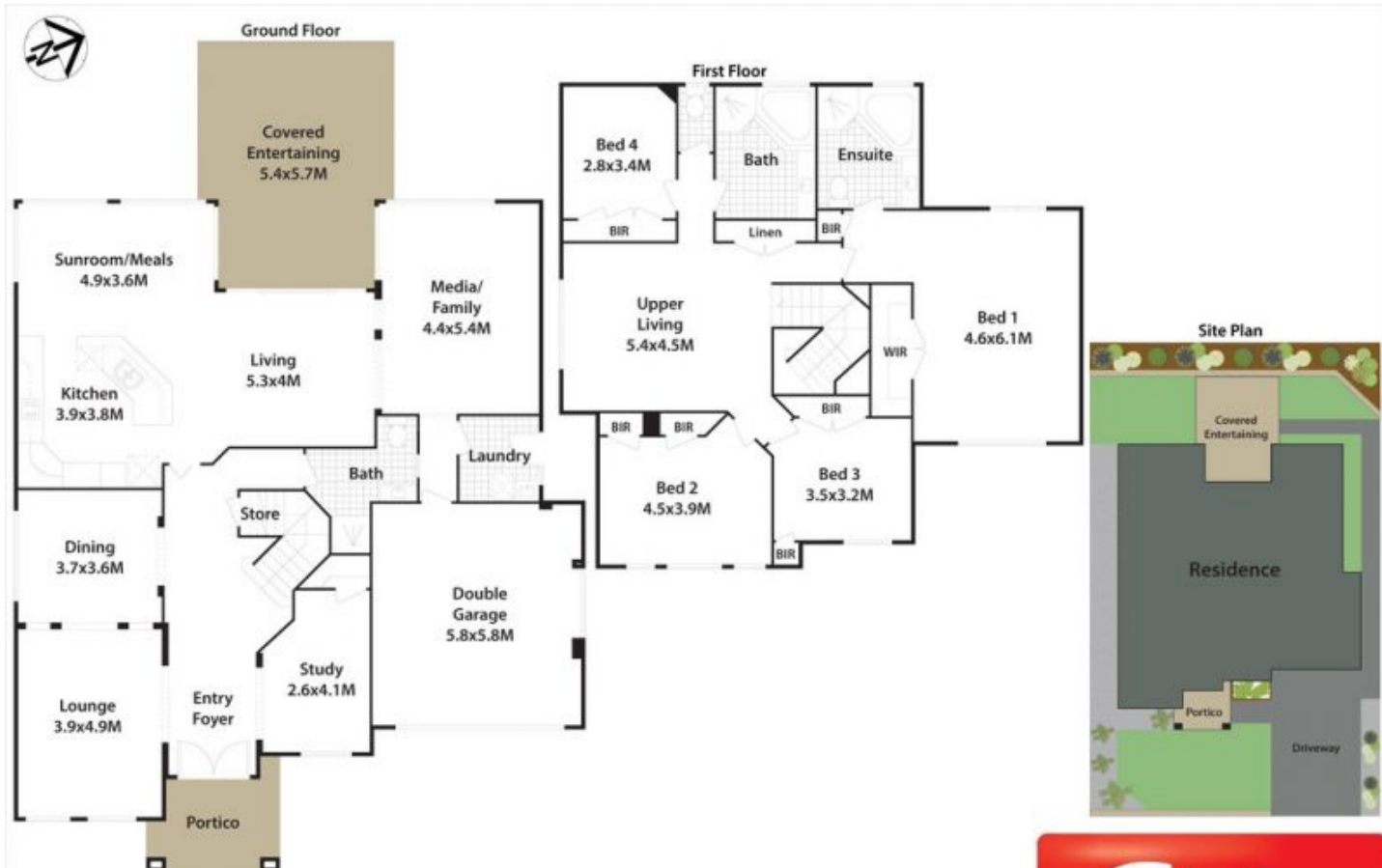
- Vast collection of spacious living and dining zones
- Media room features brand new carpet and built-in

Type : House
Land Size : 555 sqm
View : <https://www.aitkenre.com.au/8061021>



Joey Lustrì
02 4732 5055

[For full version visit the website](https://www.aitkenre.com.au)



21 Heaton Ave, Claremont Meadows.

DISCLAIMER: All dimensions herein are approximate and gathered from sources believed to be reliable. Whilst every effort is made for the accuracy of our plans, interested parties should rely on their own enquiries.

