



25 Pardalote Place GLENMORE PARK NSW

4  1  1 

Here is a fantastic opportunity for all buyers to secure a great property in the popular suburb of Glenmore Park.

This well presented property offers a versatile floor plan and boasts 4 good-sized bedrooms, separate living and dining zones and is situated on a 468sqm easy maintenance land parcel.

This delightful home is nestled in a quiet Cul-de-sac and is close to Primary and High Schools, Glenmore Park Town Centre, Public Transport and the M4 Motorway.

4 good-sized bedrooms, with the master enjoying a built-in wardrobe and access to the main bathroom
Neat and tidy bathroom , extra separate toilet next to

Type : House
Land Size : 468 sqm
View : <https://www.aitkenre.com.au/8061002>

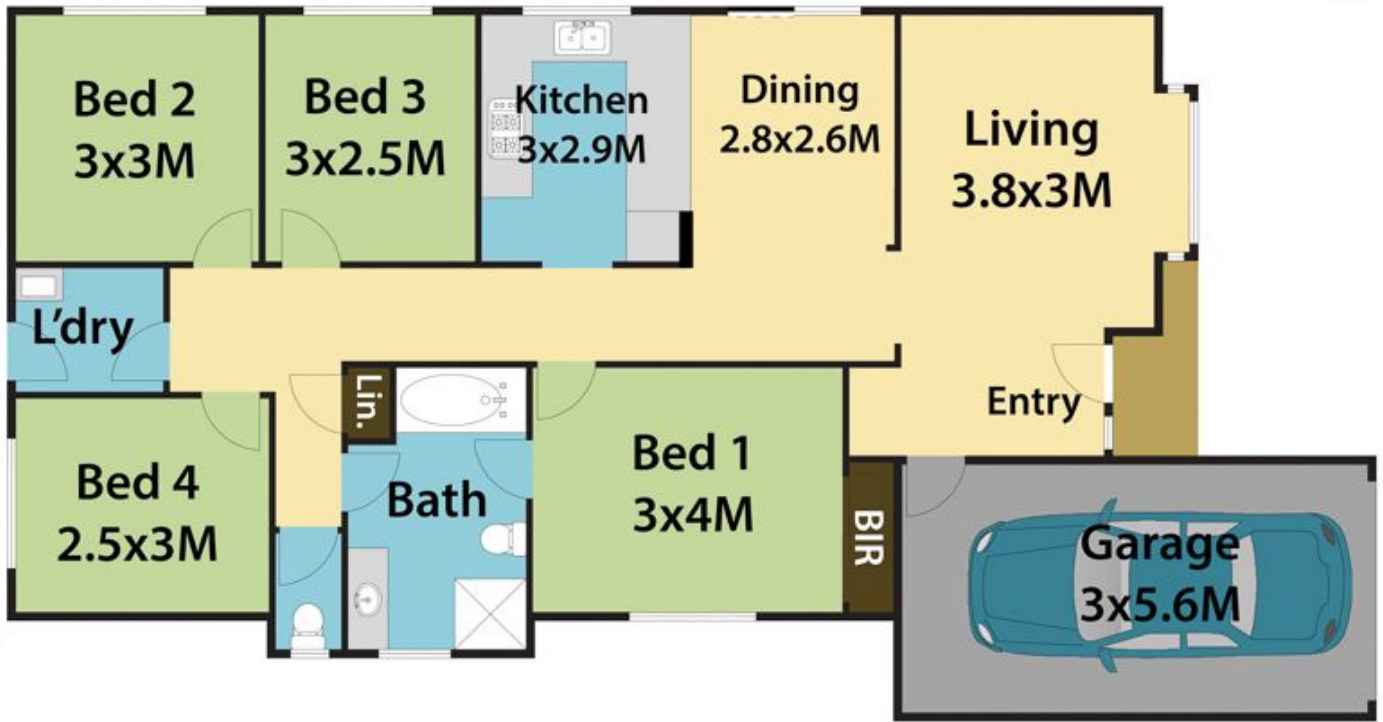


Joey Lustrì
02 4732 5055

[For full version visit the website](https://www.aitkenre.com.au)



DISCLAIMER: All dimensions herein are approximate and gathered from sources believed to be reliable. Whilst every effort is made for the accuracy of our plans, interested parties should rely on their own enquiries.



25 Pardalote Pl, Glenmore Park.

