



340 LITTLEFIELDS Road MULGOA NSW

4  2  2 

Completely washed with an abundance of natural light and landscaped gardens, this architecturally crafted residence exudes luxury, privacy and versatile family living. The extensive interiors seamlessly flow through bi-fold doors to a brilliant all-weather terrace and child-friendly yard, perfect for all-season entertaining.

The 830sqm block is wonderfully located close to everyday amenities including premium schools, grocers and cafes, with Sydney CBD less than an hour's drive away.

Type : House
Land Size : 830.6 sqm
View : <https://www.aitkenre.com.au/8060701>

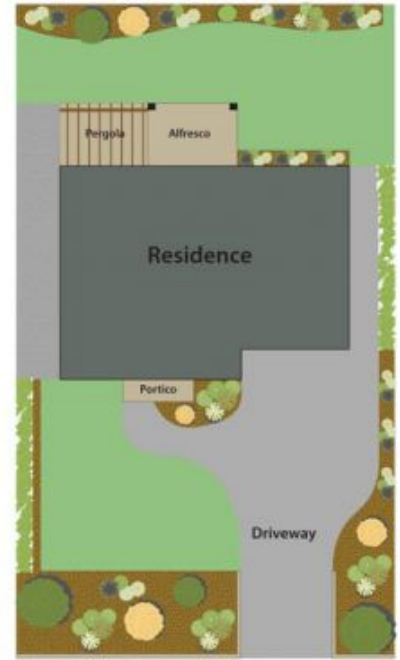


Damian Sexton

Interior

- Spacious dual level design with formal front lounge/ dining room
- Open concept kitchen adjoins the large meals and family

[For full version visit the website](https://www.aitkenre.com.au)



DISCLAIMER: All dimensions herein are approximate and gathered from sources believed to be reliable. While every effort is made for the accuracy of our plans, interested parties should rely on their own enquiries.

