



15 ROXYS Way MULGOA NSW

3  2  2 

Prominently elevated on an 776sqm block, this immaculately landscaped residence seamlessly combines a family-friendly layout with stylish modern updates and private outdoor entertaining. It enjoys sweeping, elevated views that extend out over a neighbouring lake and Mulgoa valley.

The property is peacefully located close to Mulgoa Public School and local shopping centres.

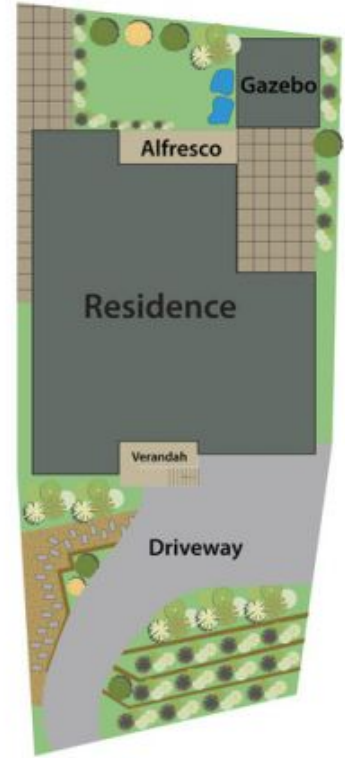
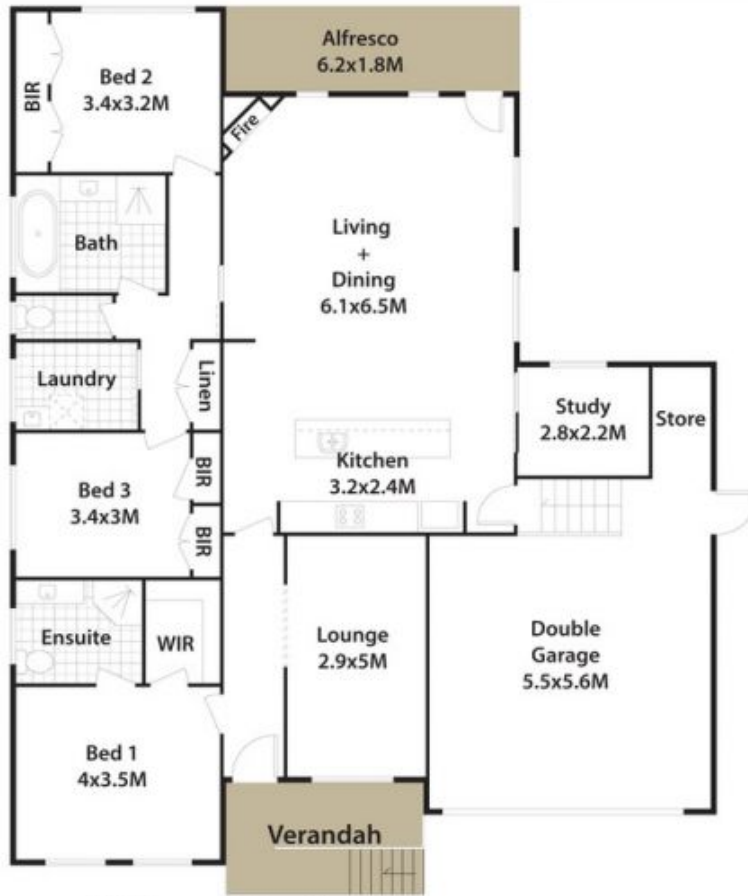
- Practical single level design with an open living and dining space
- Separate lounge room extends to the front, all-weather pergola
- Established rear garden with a fish pond and level, low maintenance synthetic grassed area

Type : House
Land Size : 776 sqm
View : <https://www.aitkenre.com.au/8060694>



Damian Sexton

[For full version visit the website](https://www.aitkenre.com.au)



15 Roxys Way, Mulgoa.

DISCLAIMER: All dimensions herein are approximate and gathered from sources believed to be reliable. Whilst every effort is made for the accuracy of our plans, interested parties should rely on their own enquiries.

