



**9 Lady Jamison Drive GLENMORE PARK NSW**

4  2  3 

Promising a lifestyle of unrivalled luxury and prestige, this flawless family home has been meticulously transformed through a contemporary renovation of the highest quality. It offers a streamlined single level design with multiple entertaining zones, that seamlessly extend out to a wraparound terrace embraced by a tropical solar heated salt water swimming pool and fully landscaped gardens.

Located in the popular stage 1 of Glenmore Park It's exclusively placed on an elevated sun drenched 790sqm land parcel, opposite native parkland and is just moments from quality schools, public transport and Glenmore Park Town Centre.

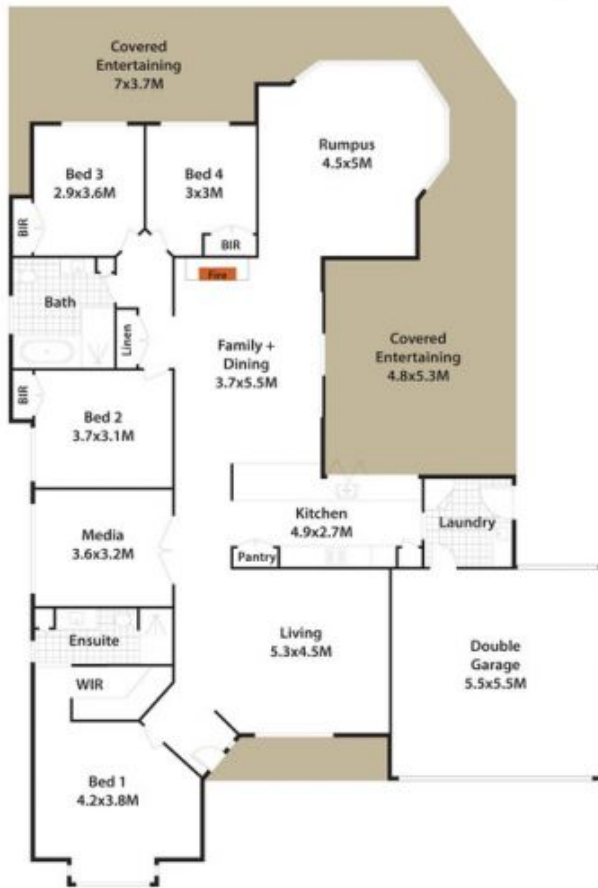
Opportunities like this are rare. Call today to book your

[For full version visit the website](https://www.aitkenre.com.au)

**Type** : House  
**Land Size** : 790 sqm  
**View** : <https://www.aitkenre.com.au/8060691>



**Joey Lustrì**  
**02 4732 5055**



## 9 Lady Jamison Dr, Glenmore Park.

DISCLAIMER: All dimensions herein are approximate and gathered from sources believed to be reliable. Whilst every effort is made for the accuracy of our plans, interested parties should rely on their own enquiries.

