






22 GIBSON Street SILVERDALE NSW

4  3  4 

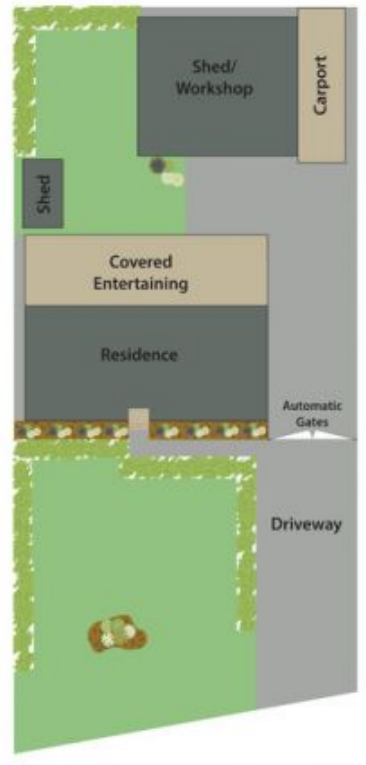
Tailored for easy indoor/outdoor living, this beautifully presented home provides modern families with an abundance of space, quality and contemporary comfort. It offers stylish finishes across a sleek single level design, and is peacefully located on a highly sought-after street.

Type : House
Land Size : 990 sqm
View : <https://www.aitkenre.com.au/8060683>

Providing first home buyers with luxury and convenience, the huge shed is complete with an alarm system, electric doors, a bathroom and its height allows for a potential car hoist. This is one of the largest sheds we have seen on a 990sqm block.

The property is just footsteps from parklands, and is close to Silverdale IGA and local eateries.

[For full version visit the website](https://www.aitkenre.com.au)



DISCLAIMER: All dimensions herein are approximate and gathered from sources believed to be reliable. Whilst every effort is made for the accuracy of our plans, interested parties should rely on their own enquiries.



22 Gibson St, Silverdale.