



9 BARRINGTON Road SILVERDALE NSW

4  2  2 

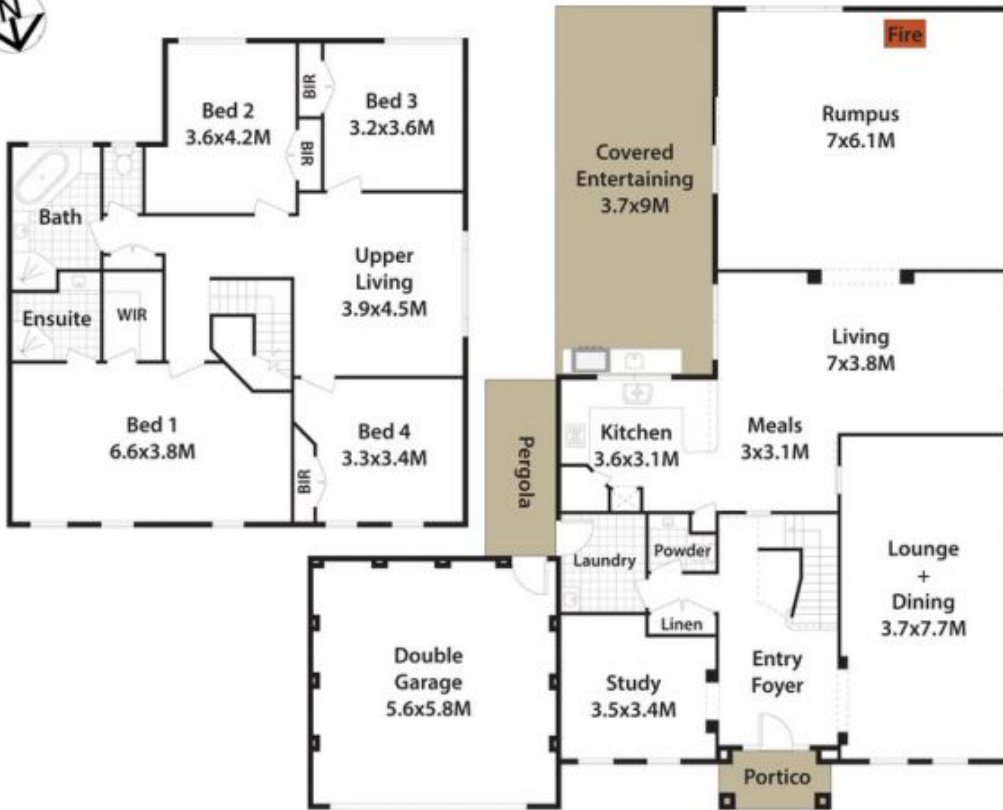
Type : House
Building Size : 36 sqm
Land Size : 4039 sqm
View : <https://www.aitkenre.com.au/8060678>



Damian Sexton



DISCLAIMER: All dimensions herein are approximate and gathered from sources believed to be reliable. Whilst every effort is made for the accuracy of our plans, interested parties should rely on their own enquiries.



9 Barrington Rd, Silverdale.

