



2 TAYLORS Road SILVERDALE NSW

4 2 4

With future subdivision potential (STCA) and a well built family home this opportunity does not come around very often in Silverdale. With the impending arrival of a completed Western Sydney Airport and billions of dollars of infrastructure projects now underway around this growing region this is an opportunity not to be missed.

Offering a generous brick and tile 4 bedroom 3 bathroom home on a 1,500 sqm corner block with plenty of side access and secure parking, this property will cater to most families or couples looking for that lifestyle change.

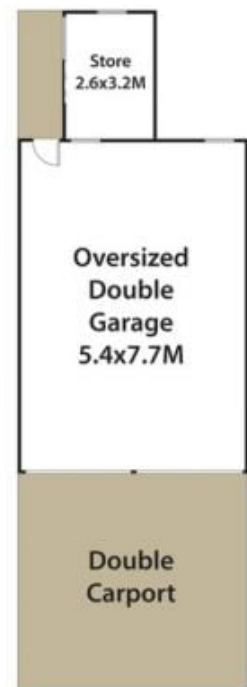
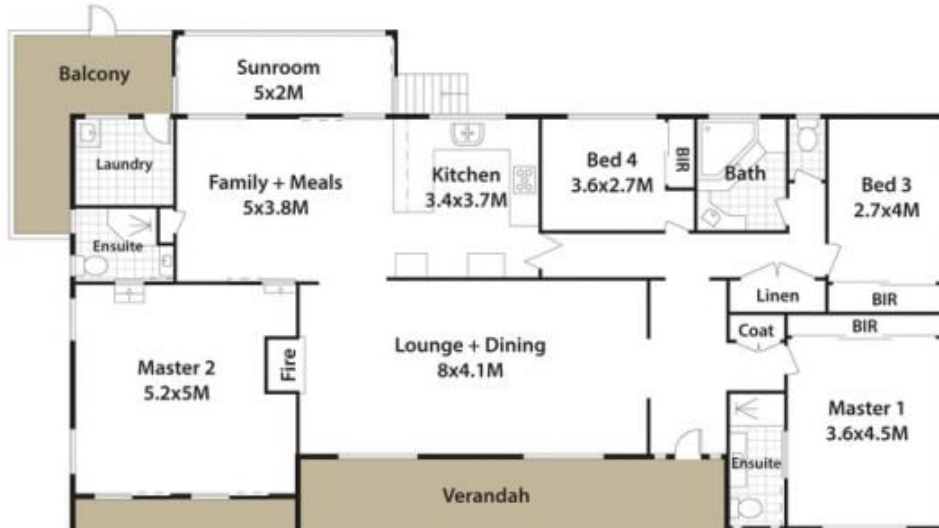
The "Grey Nomads" will love the low maintenance yard with durable plants and secure off street parking for caravans and boats, the tradesperson has plenty of room

Type : House
Price : \$ 769,000
Building Size : 21 sqm
Land Size : 1500 sqm
View : <https://www.aitkenre.com.au/8060658>



Damian Sexton

[For full version visit the website](https://www.aitkenre.com.au)



DISCLAIMER: All dimensions herein are approximate and gathered from sources believed to be reliable. Whilst every effort is made for the accuracy of our plans, interested parties should rely on their own enquiries.

2 Taylors Rd, Silverdale.

