



**49 Charles Todd Crescent WERRINGTON COUNTY NSW**

4  1  3 

Combining a comfortable single level layout with a private setting, this spacious residence offers flexibility and relaxed living that will appeal to all families. The sun soaked interiors have been flawlessly maintained and extend out to an enclosed entertainers garden. It's situated on a vast 789sqm block close to the local shops, a selection of schools and transport links.

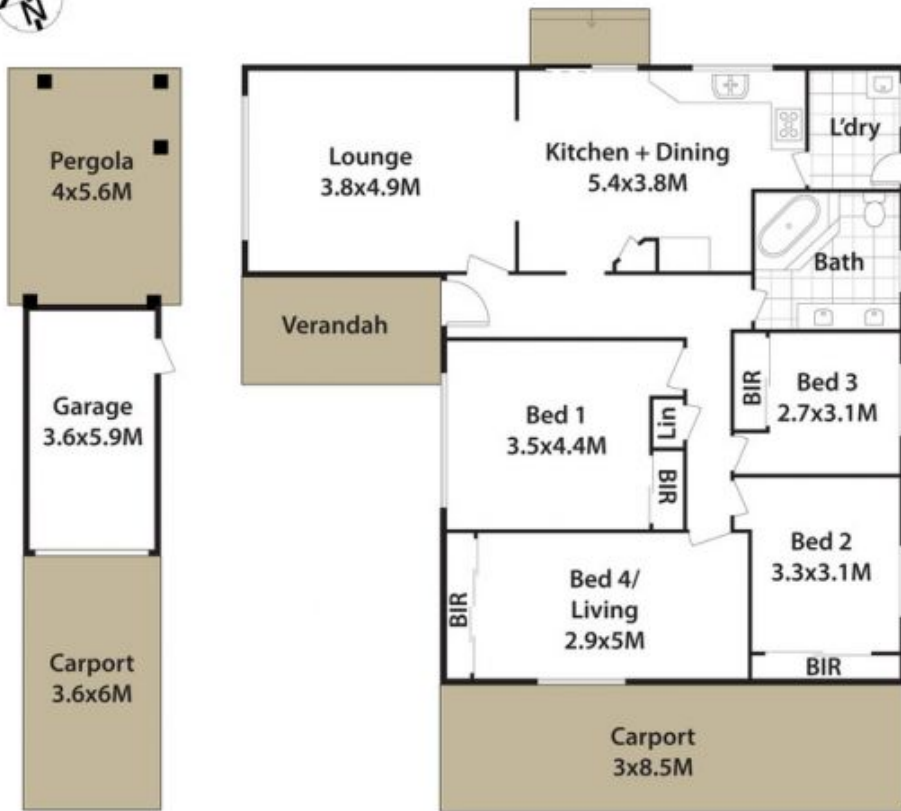
- Spacious lounge area featuring plantation shutters
- Separate dining area flows to the kitchen
- Neat & tidy kitchen is equipped with ample storage
- Spacious manicured yard featuring good-sized undercover entertaining area
- Four good-sized bedrooms all fitted built-in wardrobes

**Type** : House  
**Land Size** : 787 sqm  
**View** : <https://www.aitkenre.com.au/8060603>



**Joey Lustrì**  
**02 4732 5055**

[For full version visit the website](https://www.aitkenre.com.au)



## 49 Charles Todd Cres, Werrington County.

DISCALIMER: All dimensions herein are approximate and gathered from sources believed to be reliable. Whilst every effort is made for the accuracy of our plans, interested parties should rely on their own enquiries.

