



4-4A Player Street ST MARYS NSW

5 🛏 4 🚗 2 🚗

The property is available via private inspection, please call Joey Lustrì to book in your appointment.

This property is currently rented at \$905 per week with quality tenants looking to stay long term.

Wonderfully designed by Easter Developments to accommodate dual residency, this brand new contemporary home and private studio style accommodation has just been completed and boasts quality and luxury inclusions, multiple living spaces and high-end finishes. This property also has rear street access to the studio which is very unique. This allows the possibility of leasing both dwellings as an investment, or living in one while renting the other. This fantastic

Type : House
Land Size : 400 sqm
View : <https://www.aitkenre.com.au/8060586>

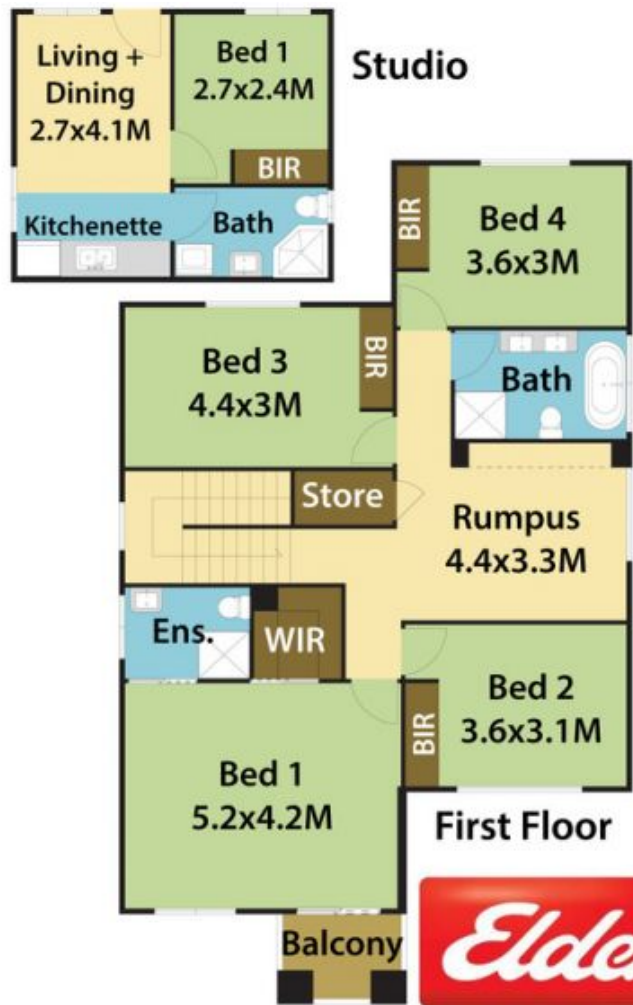
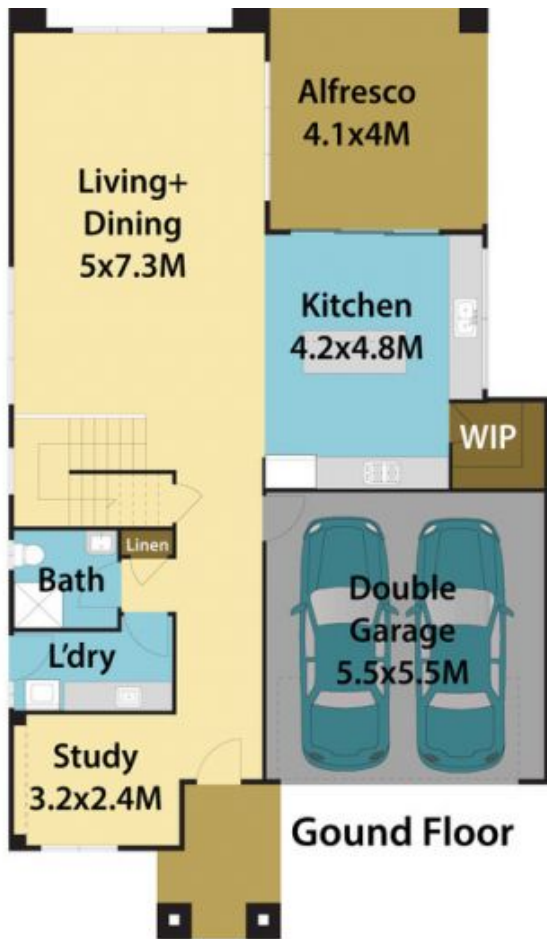


Joey Lustrì
02 4732 5055

[For full version visit the website](https://www.aitkenre.com.au)



DISCLAIMER: All dimensions herein are approximate and gathered from sources believed to be reliable. Whilst every effort is made for the accuracy of our plans, interested parties should rely on their own enquiries.



4 Player St, St Marys.

