



28 Charles Todd Crescent WERRINGTON COUNTY NSW

4  1  2 

The property is available via private inspection, please call Joey Lustri to book in your appointment.

Fully renovated, this immaculate home sits on a large 652sqm land parcel and presents great opportunity for all buyers to secure a property with stylish finishes, spacious living and dining zones, wonderful and easy to maintain landscaped gardens and most important of all there is literally nothing to do.

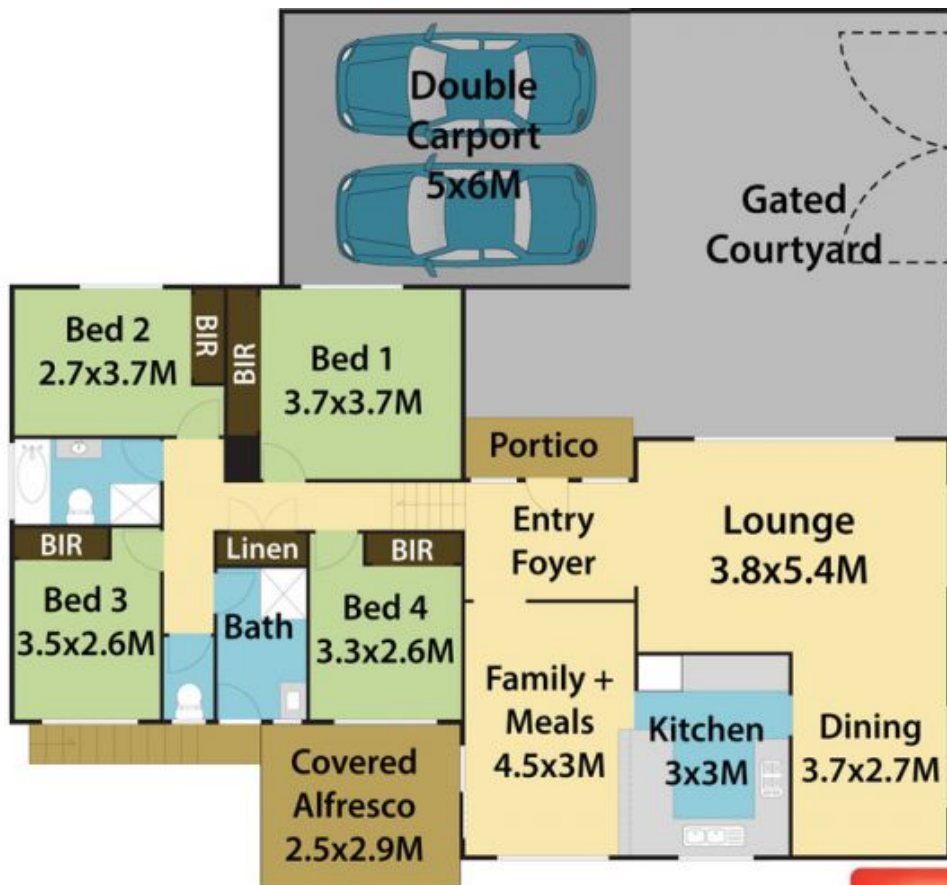
This beautifully renovated home is positioned in a prime location just moments from local shops, quality Schools and public transport.

Type : House
Land Size : 652 sqm
View : <https://www.aitkenre.com.au/8060585>



Joey Lustri
02 4732 5055

[For full version visit the website](https://www.aitkenre.com.au)



28 Charles Todd Cr, Werrington County.

DISCLAIMER: All dimensions herein are approximate and gathered from sources believed to be reliable.
Whilst every effort is made for the accuracy of our plans, interested parties should rely on their own enquiries.

