



10 Wade Close LUDDENHAM NSW

6 3 9

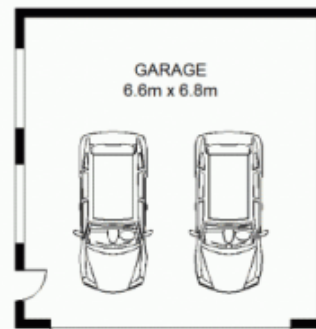
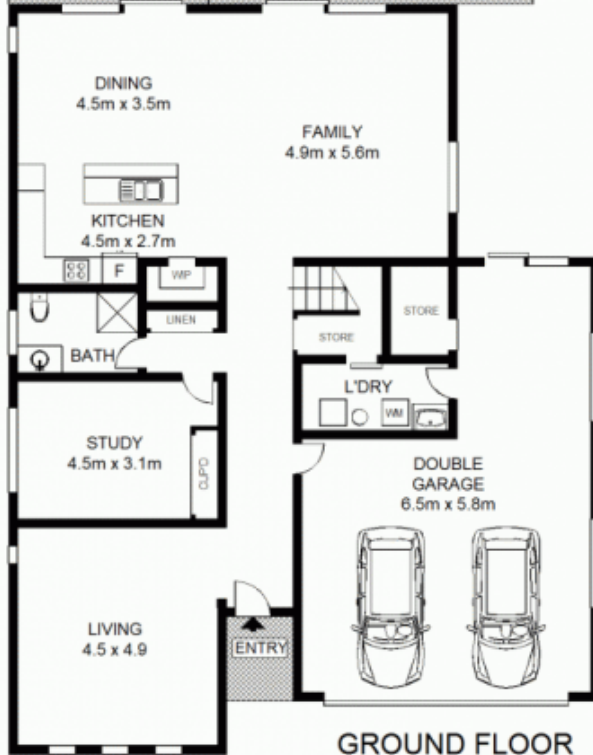
Kristy Lees welcomes you to one of the best cul-de-sac locations in Luddenham, surrounded by quality properties this magnificent modern family home is being offered for sale for the first time. Being only 4 years old this beautiful home with stylish finishes, flowing open plan layout and stunning views from multiple oversized rooms offers relaxed spacial living and effortless entertaining.

The home itself features 6 Bedrooms including beautifully positioned Master Suite with spectacular views and large balcony, 3 generous bathrooms including luxurious modern bath and double basin in main, 4 Car accommodation with internal access and exquisite kitchen occupying a central position flowing onto undercover oversized alfresco dining.

Walking through the grand entrance you are welcomed by

Type : House
Land Size : 700 sqm
View : <https://www.aitkenre.com.au/8060516>

[For full version visit the website](https://www.aitkenre.com.au)



Not to scale • All measurements are approximate • Drawn for marketing purposes only • Floorplan by © Industrie Media

S4

10 Wade Close, Luddenham

