






162 Jubilee Drive Jordan Springs NSW

3  2  4 

Words simply won't do this home justice.

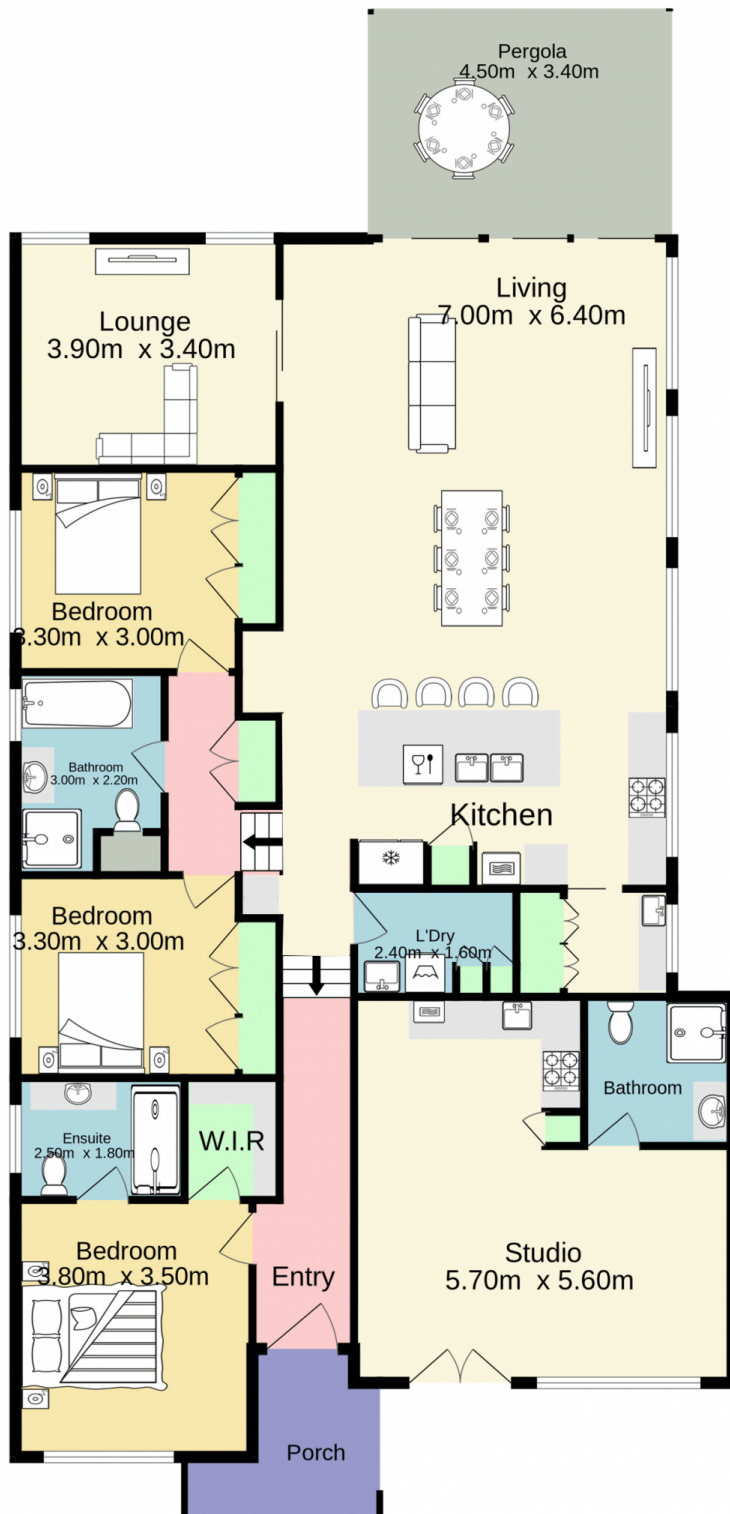
With a flexible floor plan, high quality inclusions and features, an abundance of natural light, this home will suit the most fastidious buyer.

- + Cathedral ceilings
- + Butlers pantry
- + Media room
- + Impressive facade
- + Ample off street parking
- + Unique floor plan
- + Studio with its own bathroom and kitchenette

Located only 1.5km from the Jordan Springs shopping village and even closer to the picturesque lakes and parks

[For full version visit the website](https://www.aitkenre.com.au/8060363)

Type : House
Price : \$ 1,030,000
Land Size : 455 sqm
View : <https://www.aitkenre.com.au/8060363>



Jim Aitken
Partners



TOTAL FLOOR AREA : 187.5 sq.m. approx.

Whilst every attempt has been made to ensure the accuracy of the floorplan contained here, measurements of doors, windows, rooms and any other items are approximate and no responsibility is taken for any error, omission or mis-statement. This plan is for illustrative purposes only and should be used as such by any prospective purchaser. The services, systems and appliances shown have not been tested and no guarantee as to their operability or efficiency can be given.
Made with Metropix ©2023