



10 Seaton Crescent Cranebrook NSW

3  2  8 

Located in an easy to access region of Cranebrook, this brick home is one that should be on your shopping list. Presenting a family friendly layout with multiple living areas offers an easy care lifestyle. Immaculately presented, even the most discerning buyer will enjoy an inspection of this well maintained home.

- + Ducted air conditioning
- + Side access
- + Private entry
- + Downlights
- + Ample off street parking
- + Undercover entertaining area
- + Currently tenanted for \$515 p/week (until April 2022)

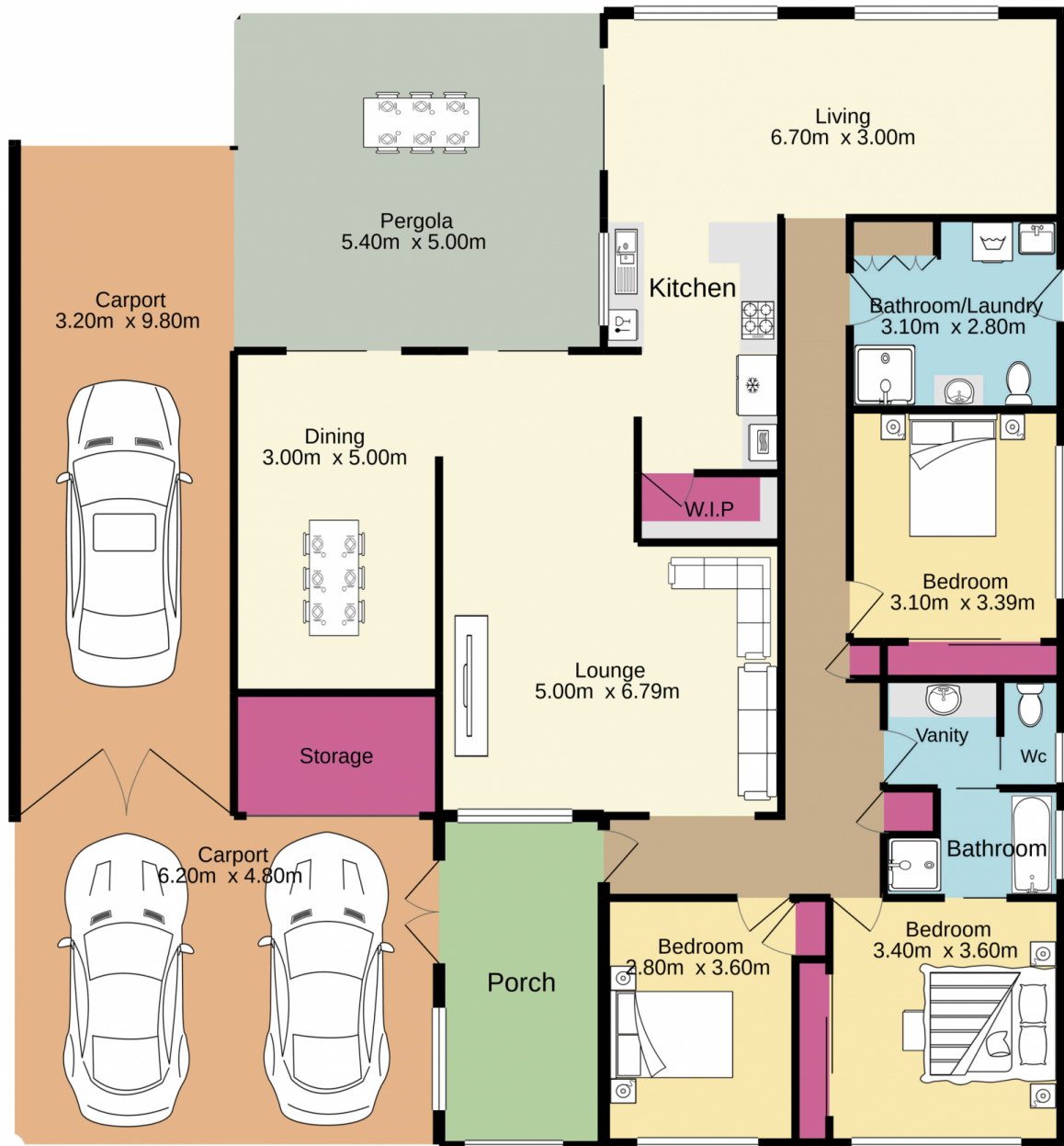
Type	: House
Price	: \$ 785,000
Building Size	: 150 sqm
Land Size	: 629 sqm
View	: https://www.aitkenre.com.au/8060249



Scott Pascoe
02 4730 1777

[For full version visit the website](https://www.aitkenre.com.au)

Ground floor
235.2 sq.m. approx.



Jim Aitken
Partners

TOTAL FLOOR AREA : 235.2 sq.m. approx.

Whilst every attempt has been made to ensure the accuracy of the floorplan contained here, measurements of doors, windows, rooms and any other items are approximate and no responsibility is taken for any error, omission or mis-statement. This plan is for illustrative purposes only and should be used as such by any prospective purchaser. The services, systems and appliances shown have not been tested and no guarantee as to their operability or efficiency can be given.
Made with Metropix ©2021

