






**48 Wedmore Road Emu Heights NSW**

5  2  4 

Located in a highly sought after area, this home will cater for those needing space. The floor plan can accommodate a variety of configurations ensuring there is room for each family member.

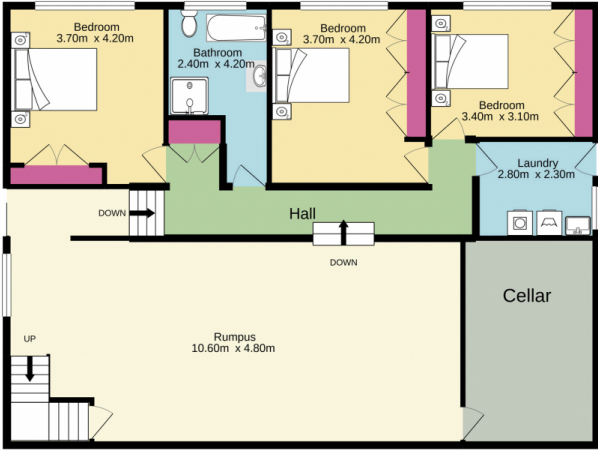
- + 5 bedrooms
- + Multiple spacious living spaces
- + Double garage
- + Built in wardrobes
- + Master bedroom with walk in and en-suite
- + 629m2 block (approx)
- + Great views

**Type** : House  
**Price** : \$ 810,000  
**Land Size** : 629 sqm  
**View** : <https://www.aitkenre.com.au/8060236>

Being only a short walk to local preschools, the areas best public school and a short drive to the Lennox shopping

[For full version visit the website](https://www.aitkenre.com.au)

Lower floor



Entrance floor



Whilst every attempt has been made to ensure the accuracy of the floorplan contained here, measurements of doors, windows, rooms and any other items are approximate and no responsibility is taken for any error, omission or mis-statement. This plan is for illustrative purposes only and should be used as such by any prospective purchaser. The services, systems and appliances shown have not been tested and no guarantee as to their operability or efficiency can be given.  
 Made with Metropix ©2020

