



#### 4 Patanga Crescent Jordan Springs NSW

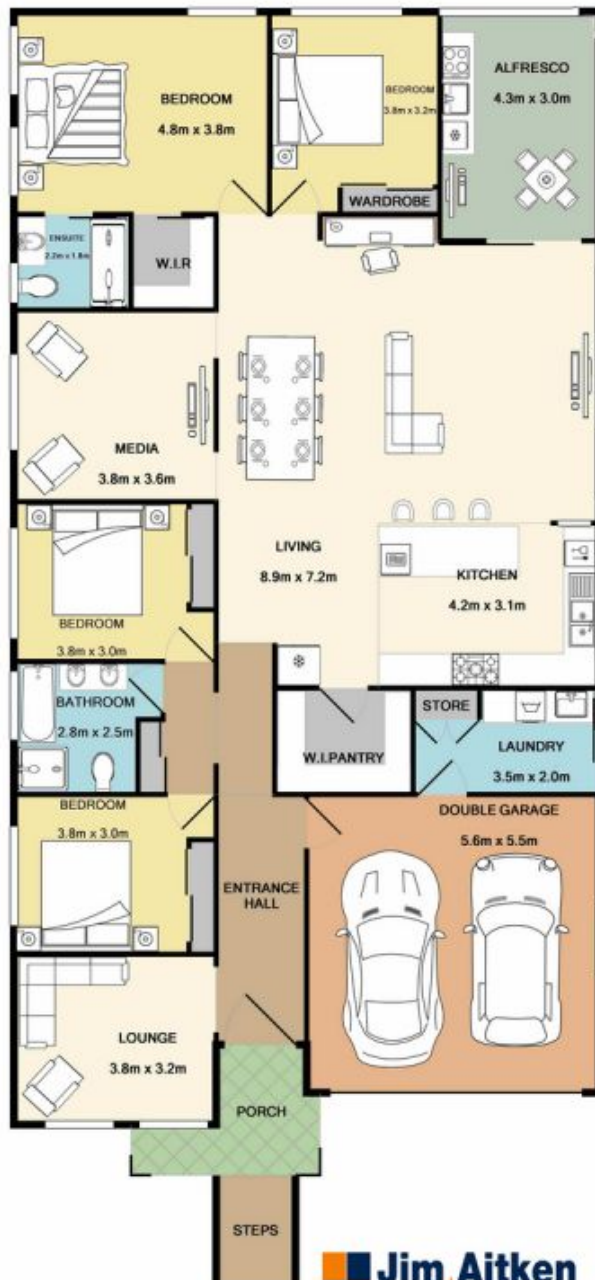
4  2  4 

We are proud to present this beautiful home to the market. From the tiled floors to the floating timber in the bedrooms this property is impressive from the moment you enter. Offering 4 bedrooms with B.I.Rs to three bedrooms, walk in robe and ensuite in the main, floor to ceiling tiles in both bathrooms, three living areas, computer nook and alarm. The kitchen will make your friends envious with it's great food preparation area, large island bench and walk in pantry not to mention the alfresco area with kitchenette sink, matching stone bench with gas cook top and automatic alfresco insect blinds. Situated on a 405m2 block, this home is the whole package.

- + Gas cooktop, & dishwasher
- + 40mm Ceaserstone benchtops

**Type** : House  
**Land Size** : 405 sqm  
**View** : <https://www.aitkenre.com.au/8060189>

[For full version visit the website](https://www.aitkenre.com.au)



**Jim Aitken**  
Partners

Whilst every attempt has been made to ensure the accuracy of the floor plan contained here, measurements of doors, windows, rooms and any other items are approximate and no responsibility is taken for any error, omission, or mis-statement. This plan is for illustrative purposes only and should be used as such by any prospective purchaser. The services, systems and appliances shown have not been tested and no guarantee as to their operability or efficiency can be given.  
Made with Metropix (C)2019