






### 116 College Street Cambridge Park NSW

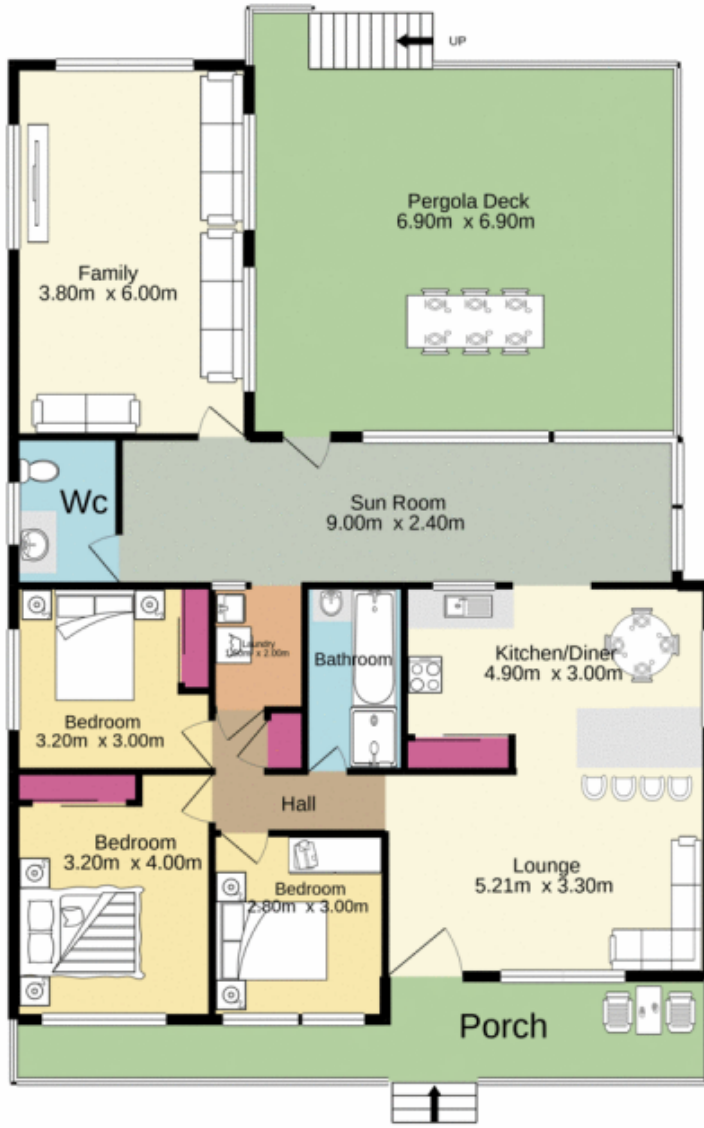
3  1  3 

With the market picking up don't delay in viewing this fantastic family home. Featuring three generously sized bedrooms, multiple large living area's and a great sized under cover deck area, there is plenty of space for everyone. There are ceiling fans and built in robes in each bedroom plus two reverse cycle air conditioners to ensure you are comfortable all year round. Families will also love the grassed rear yard, carport and parking space behind gates while investors will appreciate the corner block - may suit a granny flat (STCA).

- + Convenient Location
- + Walking distance to Kingswood train station
- + Opposite Steamroller Park
- + Schools and bus stops nearby

[For full version visit the website](https://www.aitkenre.com.au)

**Type** : House  
**Price** : \$ 550,000  
**Building Size** : 128 sqm  
**Land Size** : 605 sqm  
**View** : <https://www.aitkenre.com.au/8060176>



Whilst every attempt has been made to ensure the accuracy of the floorplan contained here, measurements of doors, windows, rooms and any other items are approximate and no responsibility is taken for any error, omission or mis-statement. This plan is for illustrative purposes only and should be used as such by any prospective purchaser. The services, systems and appliances shown have not been tested and no guarantee as to their operability or efficiency can be given.  
Made with Metropix ©2020