






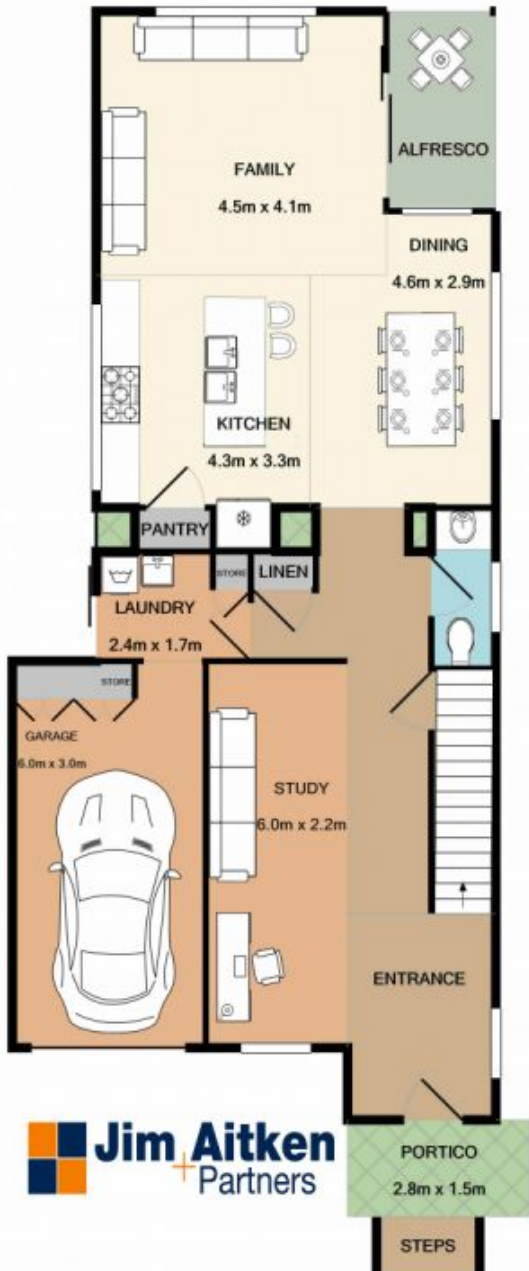
### 31 Guardian Way Jordan Springs NSW

4  2  2 

Built and designed by Metricon with all of the added upgrades, the Banksia 27 design will make your mouth water, this is the type of home that says forever. From the extra large entry into the home with the staircase leading upstairs you are immediately impressed, the quality and comfort exudes in every square inch. The tiled flooring downstairs contrasts perfectly with the plantation shutters, the stunning kitchen area offers a 40mm ceaserstone island waterfall bench, 900mm fisher & paykel stove and oven with glass splash back, dishwasher and stainless steel appliances making it the perfect place to prepare a lifetime of family meals. Head upstairs to find your third living area and your four bedrooms, the main is complemented with a walk in robe and ensuite, making you feel right at home. The contemporary home invites

**Type** : House  
**Price** : \$ 780,000  
**Land Size** : 303 sqm  
**View** : <https://www.aitkenre.com.au/8060111>

[For full version visit the website](https://www.aitkenre.com.au)



GROUND FLOOR



1ST FLOOR

Whilst every attempt has been made to ensure the accuracy of the floor plan contained here, measurements of doors, windows, rooms and any other items are approximate and no responsibility is taken for any error, omission, or mis-statement. This plan is for illustrative purposes only and should be used as such by any prospective purchaser. The services, systems and appliances shown have not been tested and no guarantee as to their operability or efficiency can be given.  
 Made with Metropix ©2019