






### Lot 5083 Wyalla Place Jordan Springs NSW

4  2  4 

#### FULLY FIXED TURN KEY PRICE!

This fabulous property at Jordan Springs has just been listed.

Quality inclusions:

- Higher than normal ceilings (2590mm)
- Stone benches to kitchen, bathroom and ensuite
- Window coverings throughout and so much more!

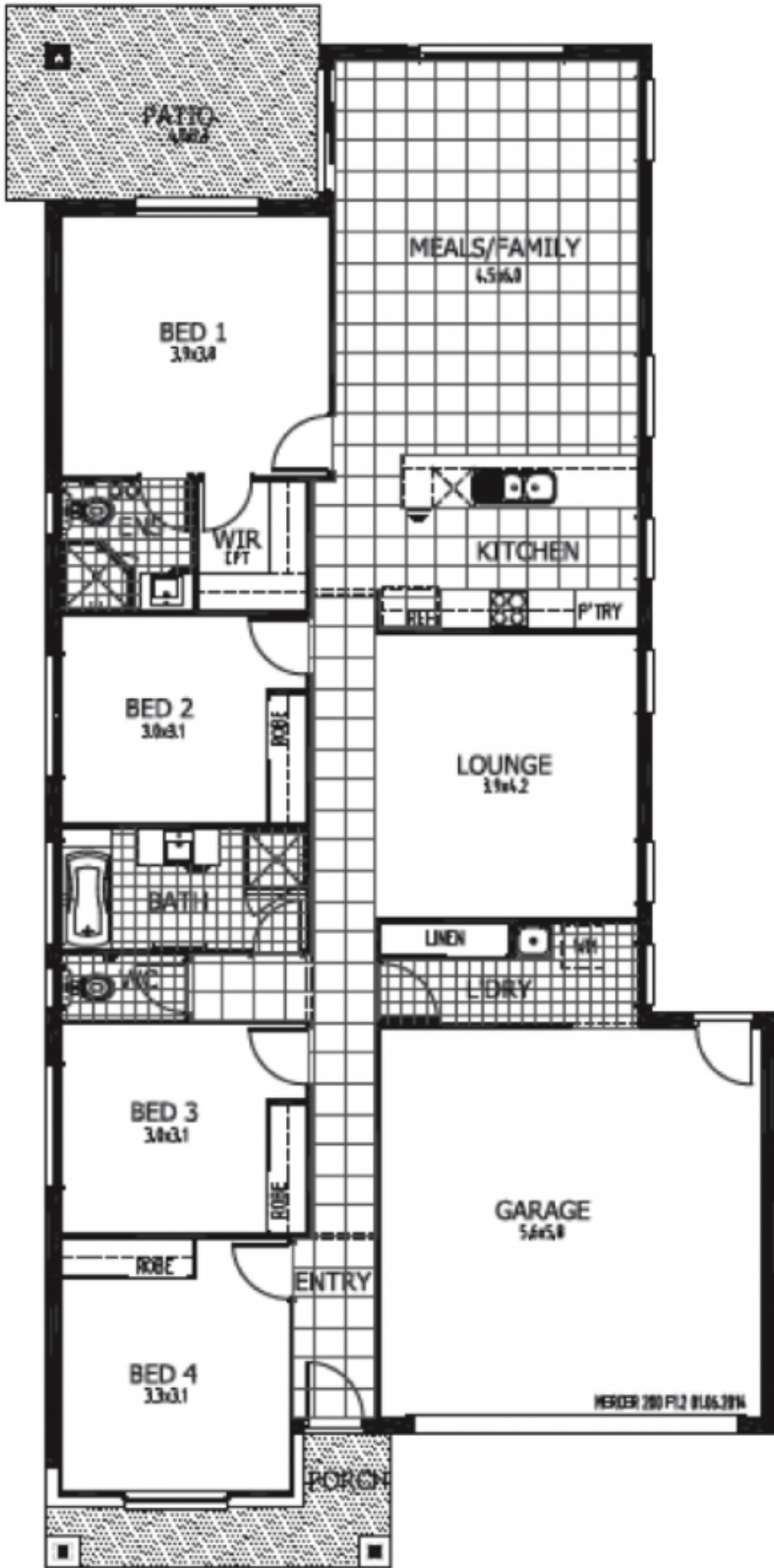
**Type** : House  
**Price** : \$ 659,980  
**Building Size** : 205 sqm  
**Land Size** : 375 sqm  
**View** : <https://www.aitkenre.com.au/8060044>

Split contracts.

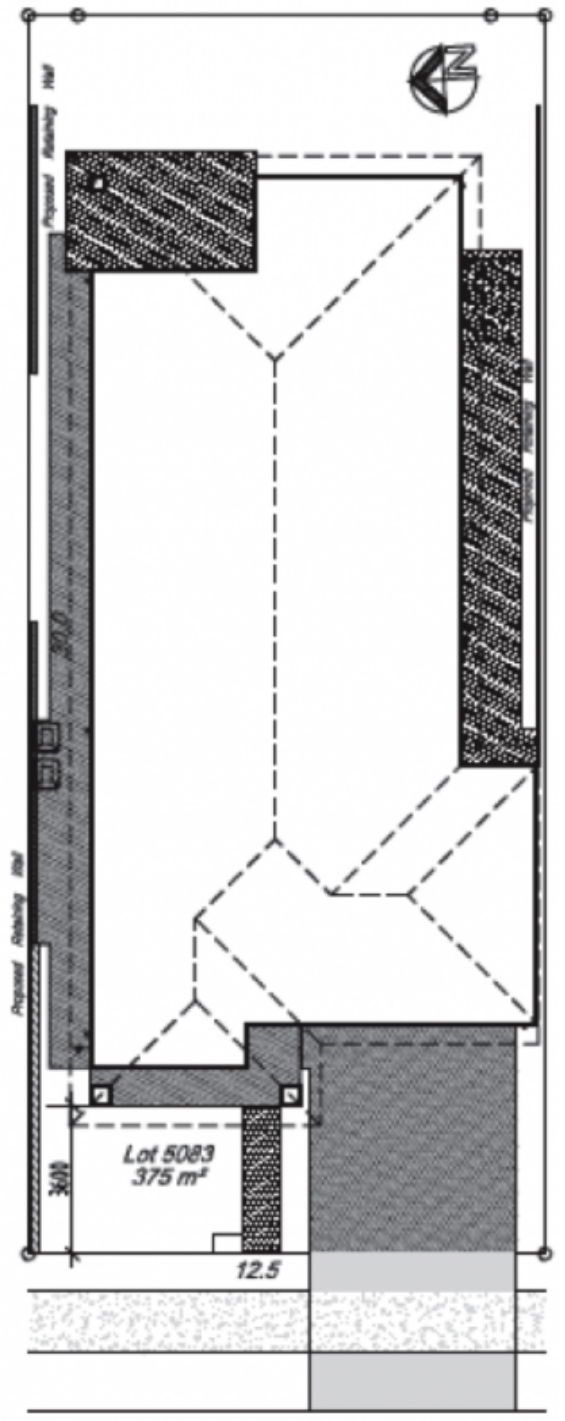
One for land - full deposit required at exchange of land contract - 5% of \$379,000 = \$18,950.00 land price component

One contract for home - full deposit required at exchange of and contract 5% of \$280,980 = \$14,049.00 house price component

[For full version visit the website](https://www.aitkenre.com.au)



148



ROAD No. 4