



## 14 Tedbury Road Llandilo NSW

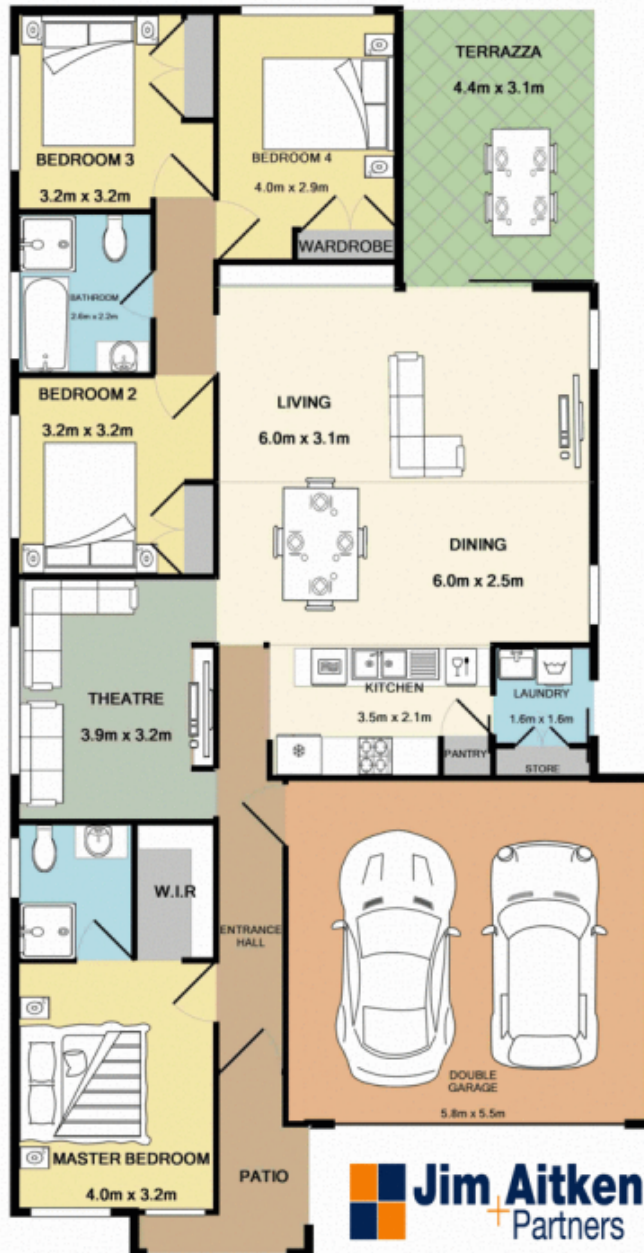
4  2  4 

Only a few months old, this beautiful family home in Jordan Springs East offers spacious living and high ceilings throughout. The foyer is grand and welcoming which leads to two spacious living areas. This immaculate Beechwood home presents a seamless floor plan with the perfect blend of sleek and modern design. An eye for detail and a knack for style have incorporated so many features into this striking home with high ceilings, ducted air, separate media room and down lights.

- + Separate media room
- + Open plan living/dining
- + Double remote garage with internal access, ducted air and alarm system
- + Stone bench tops in kitchen and bathrooms

**Type** : House  
**Building Size** : 150 sqm  
**Land Size** : 350 sqm  
**View** : <https://www.aitkenre.com.au/8060034>

[For full version visit the website](https://www.aitkenre.com.au)



**Jim Aitken**  
Partners

Whilst every attempt has been made to ensure the accuracy of the floor plan contained here, measurements of doors, windows, rooms and any other items are approximate and no responsibility is taken for any error, omission, or mis-statement. This plan is for illustrative purposes only and should be used as such by any prospective purchaser. The services, systems and appliances shown have not been tested and no guarantee as to their operability or efficiency can be given.  
Made with Metropix ©2019