



## 2/47 Barry Street Cambridge Park NSW

3 2 2

Well-maintained and beautifully-presented, this Cape Cod-style town-home is ready for its new owners. The floor plan offers plenty of space for a family with three bedrooms, all with built-in mirrored robes, a two-way bathroom with bath and an ensuite to the master bedroom.

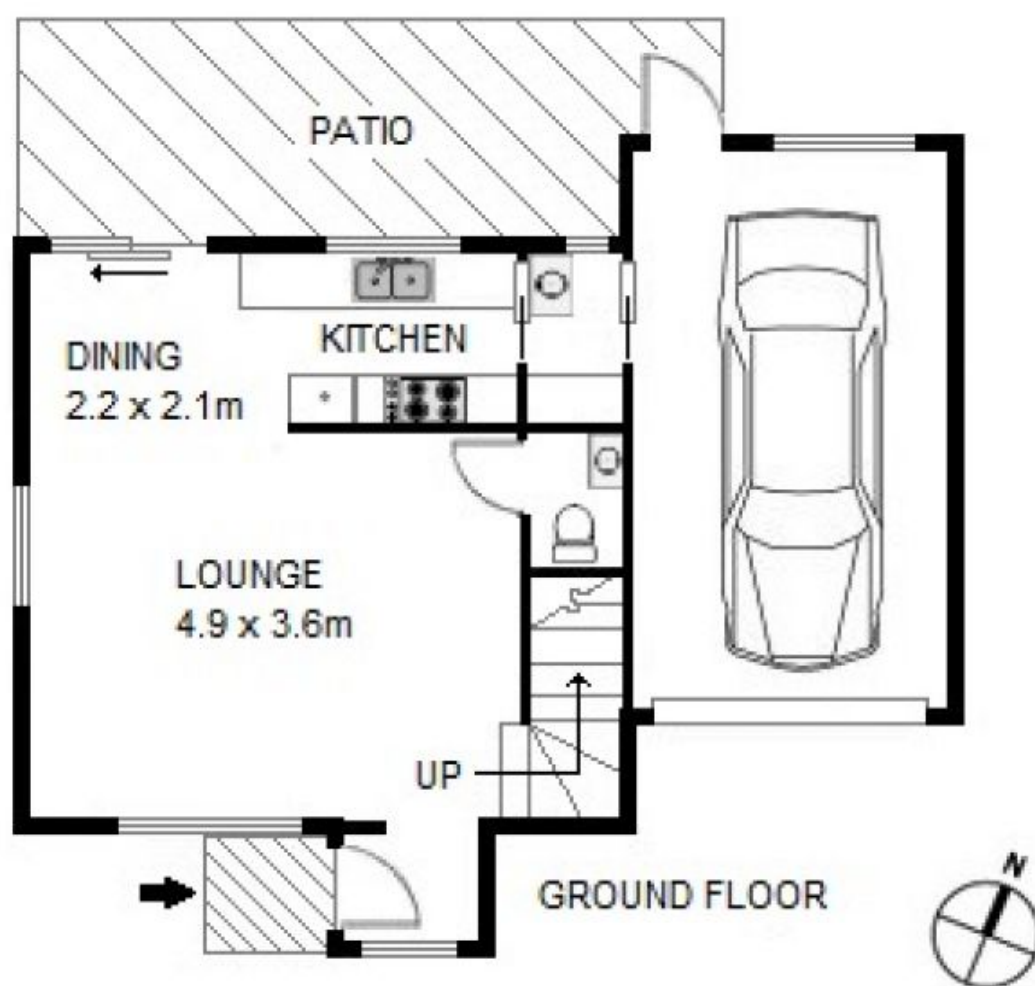
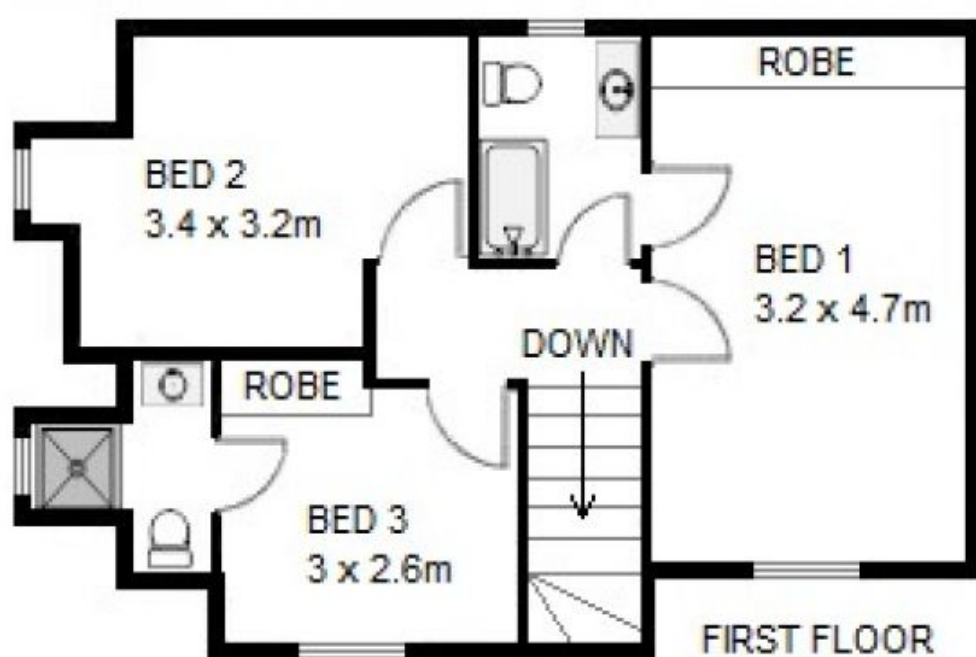
There is a well-equipped galley-style kitchen with stone bench tops and a glass cook top, plus an open-plan tiled living and dining space and a rear covered patio and sunny courtyard. A single car garage completes the floor plan.

This low-maintenance, modern home is perfect for the first home buyer or investor looking to make the most of a high demand for quality, centrally-located properties.

**Type** : Townhouse

**View** : <https://www.aitkenre.com.au/8059981>

[For full version visit the website](https://www.aitkenre.com.au)



2/47 BARRY STREET  
CAMBRIDGE PARK 2747