






## 22 View Street Lawson NSW

3  2  4 

Set in a green, luscious street and situated on over 950sqm, this impressive home offers so much:

- + Three large bedrooms with built-in wardrobes
- + Master bedroom with en-suite and walk-in wardrobe
- + Large living room
- + Split system air conditioning
- + Huge family room adjacent to the kitchen
- + Over 950sqm fully fenced block
- + Massive four-car garage with ample workshop space

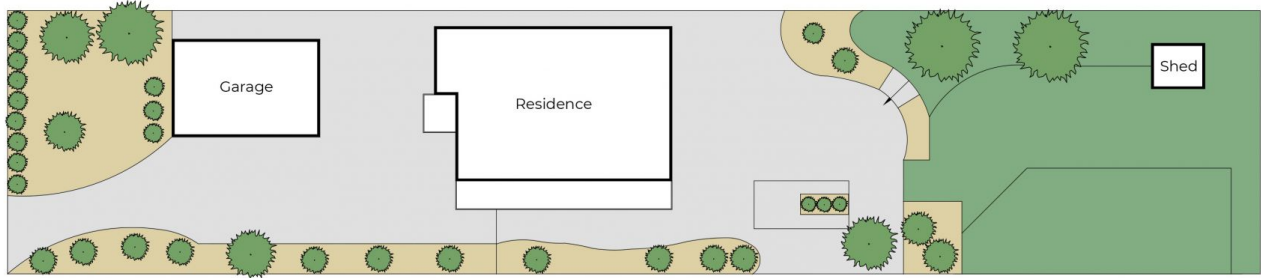
Located less than a kilometre from Lawson's shops and a little further to Lawson's station, this opportunity should not be missed.

**Type** : House  
**Price** : \$ 830,000  
**Land Size** : 968 sqm  
**View** : <https://www.aitkenre.com.au/8059841>

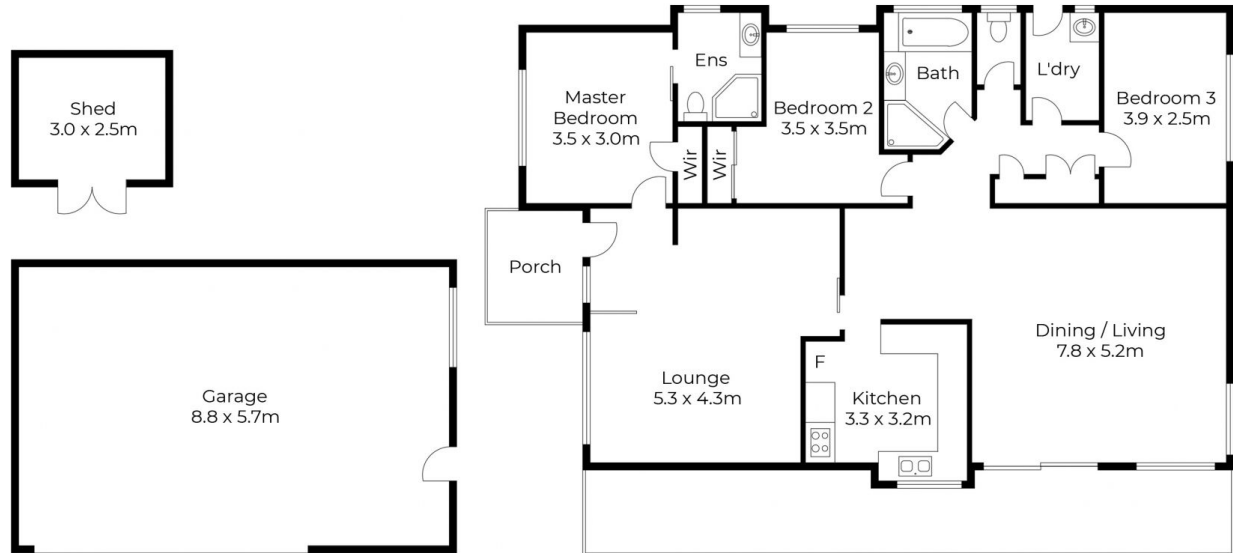


**Felipe Martin**  
**02 4739 1111**

[For full version visit the website](https://www.aitkenre.com.au)



Site Plan



Floor plans and site plans are for illustrative purposes only. They are not part of any legal document or title and are subject to errors, omission, and inaccuracies. Whilst every attempt has been made to ensure the accuracy of this plan, measurements of doors, windows, rooms, cupboards etc are approximate only.

APPROXIMATE AREA  
LIVING AREA : 123 m<sup>2</sup>  
TOTAL AREA : 181 m<sup>2</sup>