



## 47 Byrne Street Lapstone NSW

4  2  2 

In a peaceful, tranquil community, this large, tri level home is perfect for the young couple or growing family. Featuring a flexible floorplan the home consists of casual and formal living options and glorious light filled interiors, the property has a marvellous feel as soon as you walk through the front door.

- + Four bedrooms
- + Two bathrooms & downstairs powder room
- + Multiple living spaces
- + Huge, undercover area to take in the mountain's vistas
- + Single carport & loads of storage
- + Huge 3461m2 block (approx)
- + Ducted gas heating and air conditioning for year round comfort

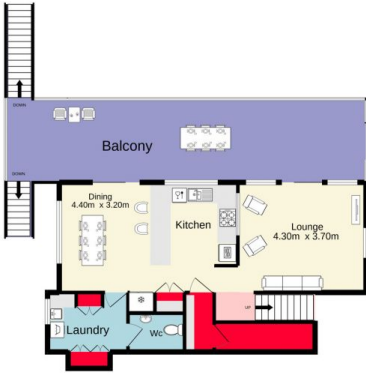
**Type** : House  
**Land Size** : 3461 sqm  
**View** : <https://www.aitkenre.com.au/8059782>



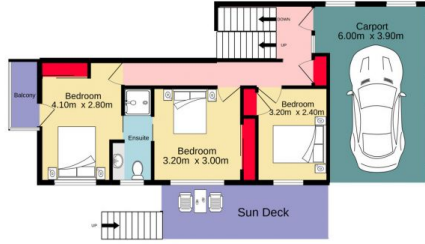
**Kieran Flanagan**  
**02 4739 1111**

[For full version visit the website](https://www.aitkenre.com.au)

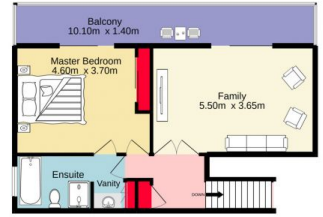
Ground floor  
56.8 sq.m. approx.



Entrance floor  
67.3 sq.m. approx.



1st floor  
51.5 sq.m. approx.



TOTAL FLOOR AREA: 175.6 sq.m. approx.

Whilst every attempt has been made to ensure the accuracy of the floorplan contained here, measurements of doors, windows, rooms and any other items are approximate and no responsibility is taken for any error, omission or mis-statement. This plan is for illustrative purposes only and should be used as such by any prospective purchaser. The services, systems and appliances shown have not been tested and no guarantee as to their operability or efficiency can be given.

Made with Metropix ©2022