



## 247 Great Western Highway Warrimoo NSW

4  2  6 

This amazing property is the epitome of Lower Mountains executive living. Behind remote gated entry, with an incredible amount of features on offer, this will suit your every need and more. This really is the full package! Gorgeous home, views, land + dual living/second income.

- + Stunning, four bedroom palatial home with multiple living spaces
- + Two bathrooms including stunning master ensuite with double shower
- + Soaring cathedral ceilings with ducted air & downlights
- + Huge entertaining deck overlooking uninterrupted valley views of Florabella Pass
- + Massive under-house space featuring huge utility room and additional storage

[For full version visit the website](https://www.aitkenre.com.au/8059765)

<b>Type</b>	: House
<b>Price</b>	: \$ 1,660,000
<b>Building Size</b>	: 310 sqm
<b>Land Size</b>	: 5995 sqm
<b>View</b>	: <a href="https://www.aitkenre.com.au/8059765">https://www.aitkenre.com.au/8059765</a>



**Felipe Martin**  
02 4739 1111

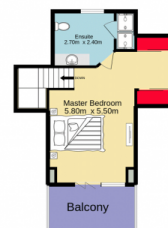
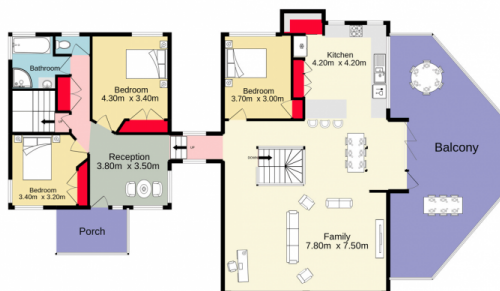
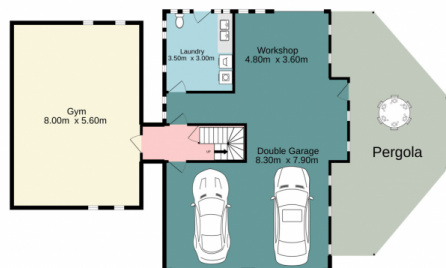


**Kieran Flanagan**  
02 4739 1111

Basement  
208.8 sq.m. approx.

Ground floor  
148.3 sq.m. approx.

1st floor  
25.8 sq.m. approx.



TOTAL FLOOR AREA : 344.8 sq.m. approx.

Whilst every attempt has been made to ensure the accuracy of the floorplan contained here, measurements of doors, windows, rooms and any other items are approximate and no responsibility is taken for any error, omission or mis-statement. This plan is for illustrative purposes only and should be used as such by any prospective purchaser. The services, systems and appliances shown have not been tested and no guarantee as to their operability or efficiency can be given.  
Made with Metropix ©2022

