



8 Wilson Way Blaxland NSW

4  2  2 

This gorgeous four bedroom single level cottage is the epitome in Mountains living. A ranch style home, with beautiful wrap around balcony this home has character galore. Featuring a sensible, single level floorplan the property consists of:

- + Four bedrooms
- + Two bathrooms
- + Renovated kitchen
- + Brand new timber deck
- + Large 1012m2 flat block
- + R2 zoning
- + Convenient location

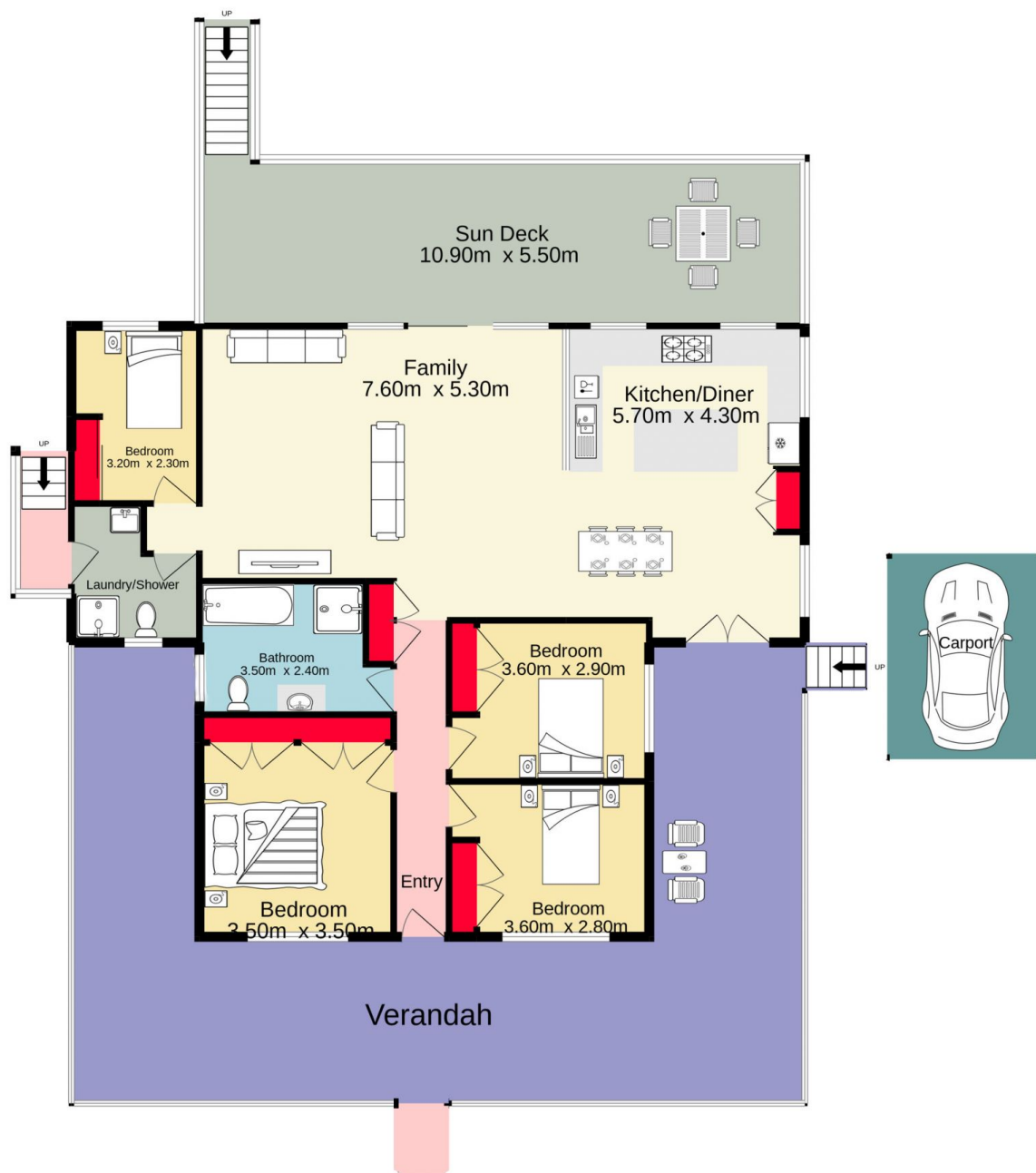
Situated a stones throw from Blaxland Railway station,

[For full version visit the website](https://www.aitkenre.com.au/8059751)

Type : House
Price : \$ 1,000,000
Land Size : 1012 sqm
View : <https://www.aitkenre.com.au/8059751>



Kieran Flanagan
02 4739 1111



Jim Aitken
Partners



TOTAL FLOOR AREA : 167.6 sq.m. approx.

Whilst every attempt has been made to ensure the accuracy of the floorplan contained here, measurements of doors, windows, rooms and any other items are approximate and no responsibility is taken for any error, omission or mis-statement. This plan is for illustrative purposes only and should be used as such by any prospective purchaser. The services, systems and appliances shown have not been tested and no guarantee as to their operability or efficiency can be given.

Made with Metropix ©2022