

28 Reserve Avenue Blaxland NSW

4  2  2 

This split-level, architect-designed beauty is nestled on a leafy, low-maintenance block in the popular Blue Mountains suburb of Blaxland. Walk to the shops for your morning coffee or take a quick walk to the station to commute. With four bedrooms, two bathrooms and two living areas, this functional floor plan will suit families and couples alike. The windows are placed to make the best of the northerly light and bushy vistas and the ducted air will keep you comfortable all year round. The gorgeous bamboo flooring and high angled ceiling give the property real flair and personality, making it a bright and inviting space with nothing to do but move in and enjoy.

- + Four bedrooms
- + Two living areas

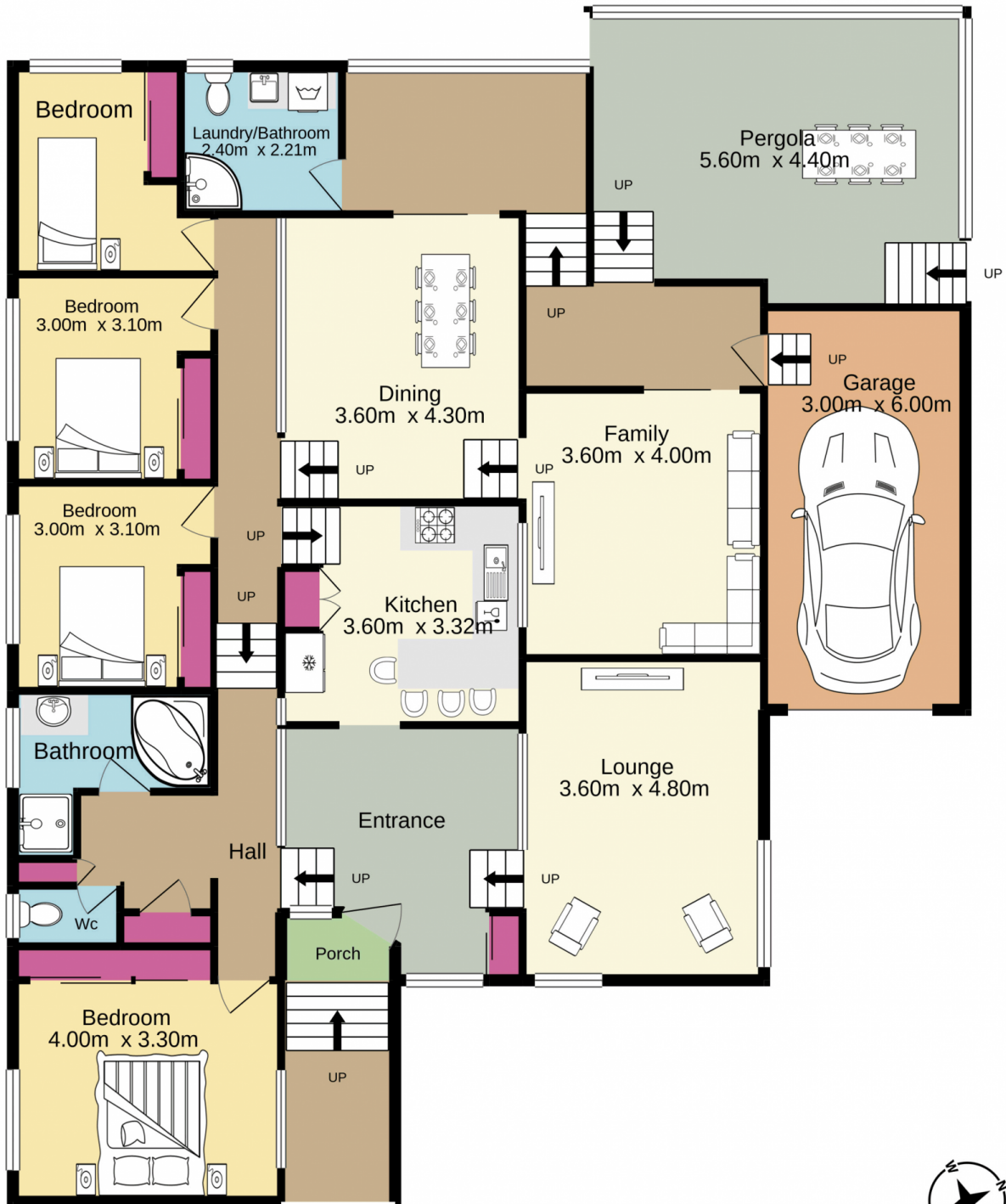
[For full version visit the website](https://www.aitkenre.com.au/8059745)

Type : House
Price : \$ 960,000
Land Size : 853 sqm
View : <https://www.aitkenre.com.au/8059745>



Kieran Flanagan
02 4739 1111

203.0 sq.m. approx.



Jim Aitken
+ Partners

TOTAL FLOOR AREA : 203.0 sq.m. approx.

Whilst every attempt has been made to ensure the accuracy of the floorplan contained here, measurements of doors, windows, rooms and any other items are approximate and no responsibility is taken for any error, omission or mis-statement. This plan is for illustrative purposes only and should be used as such by any prospective purchaser. The services, systems and appliances shown have not been tested and no guarantee as to their operability or efficiency can be given.

Made with Metropix ©2021