



34 Woodi Close Glenmore Park NSW

3  1  2 

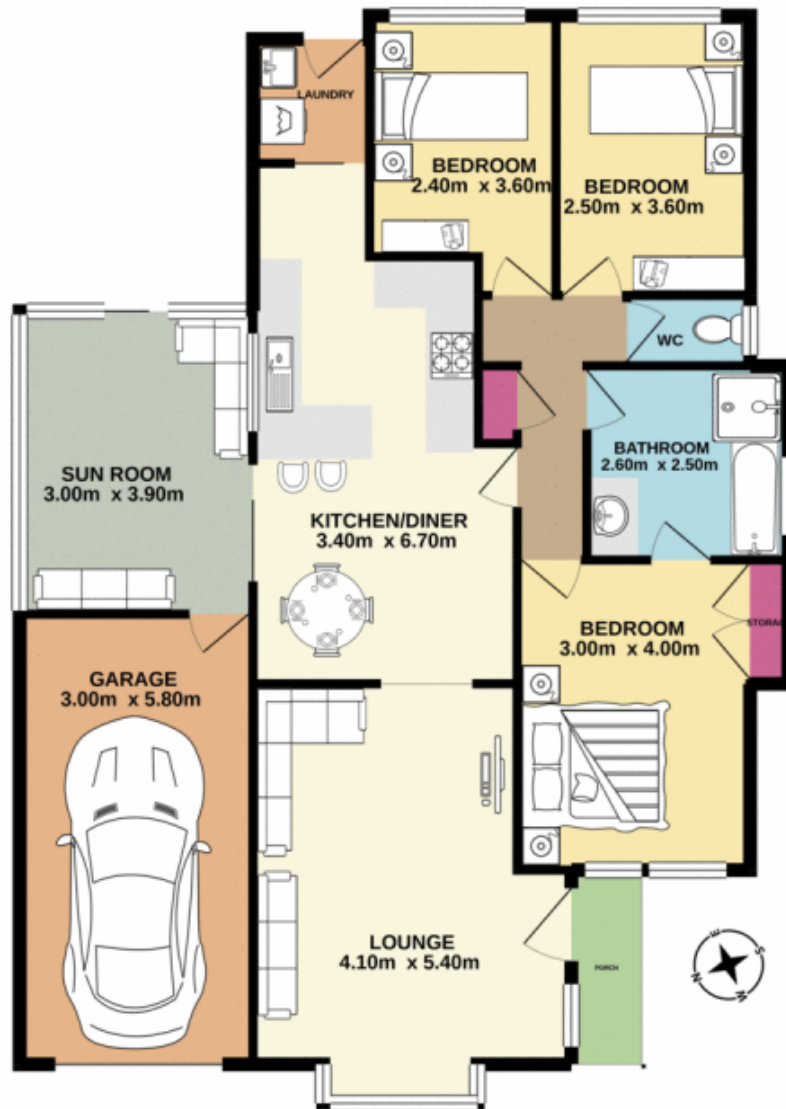
This property is an ideal start for a first home, investment or down sizer. With the added bonus of a second living area, whisper quiet location, and a usable backyard this is a must see. Priced to please, and with a functional single level floor plan some of the many features are;

- + Three bedrooms
- + Two-way bathroom
- + Single garage (internal access)
- + Two living spaces
- + Flat, useable backyard
- + Quiet, peaceful cul-de-sac
- + Close to amenities

Located in a popular position within Glenmore Park the

[For full version visit the website](https://www.aitkenre.com.au/8059721)

Type : House
Price : \$ 552,500
Land Size : 375 sqm
View : <https://www.aitkenre.com.au/8059721>



Whilst every attempt has been made to ensure the accuracy of the floorplan contained here, measurements of doors, windows, rooms and any other items are approximate and no responsibility is taken for any error, omission or mis-statement. This plan is for illustrative purposes only and should be used as such by any prospective purchaser. The services, systems and appliances shown have not been tested and no guarantee as to their operability or efficiency can be given.
 Made with Metropex ©2020