



34 The High Road Blaxland NSW

4  1  5 

Conveniently located within a short walk to the local shops, cafes, schools and transport, this charming and beautifully maintained family home sits high on a near level 1,733m2 block with views across the mountains. The light, bright interior features four bedrooms, an updated kitchen, wrap-around sunroom, full bathroom with separate w/c. The expansive garden boasts a meticulously maintained inground pool and lovely, mature specimen trees.

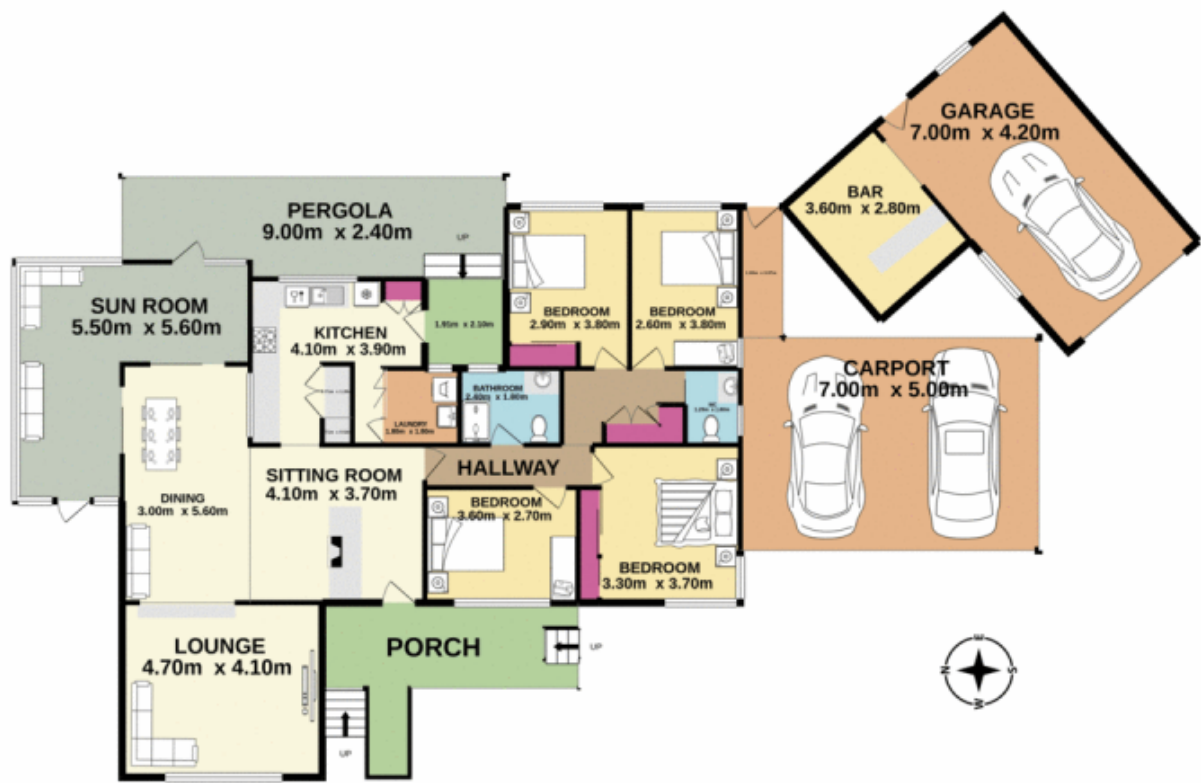
- + Handy, sought-after location
- + Huge 1733m2 near level block
- + Four bedrooms
- + Well-presented kitchen
- + Large garage + studio and additional carport
- + High ceilings

[For full version visit the website](https://www.aitkenre.com.au/8059704)

Type : House
Price : \$ 855,000
Building Size : 159 sqm
Land Size : 1733 sqm
View : <https://www.aitkenre.com.au/8059704>



Kieran Flanagan
 02 4739 1111



Jim Aitken
Partners

Whilst every attempt has been made to ensure the accuracy of the floorplan contained here, measurements of doors, windows, rooms and any other items are approximate and no responsibility is taken for any error, omission or mis-statement. This plan is for illustrative purposes only and should be used as such by any prospective purchaser. The services, systems and appliances shown have not been tested and no guarantee as to their operability or efficiency can be given.
Made with Metropix ©2020