



## 168 Great Western Highway Blaxland NSW

3  2 

Completely updated with impeccable style from front to back is this exquisite Lower Mountains home that is basically new throughout. The open plan, free-flowing floor plan encompasses three bedrooms (all with built ins), two bathrooms of absolute quality, and wonderful open plan living/dining off the stunning kitchen.

- \* Fully renovated throughout
- \* Three bedrooms
- \* Two bathrooms
- \* Off street parking
- \* Entertaining deck
- \* Double glazed windows
- \* Walk to shops/station

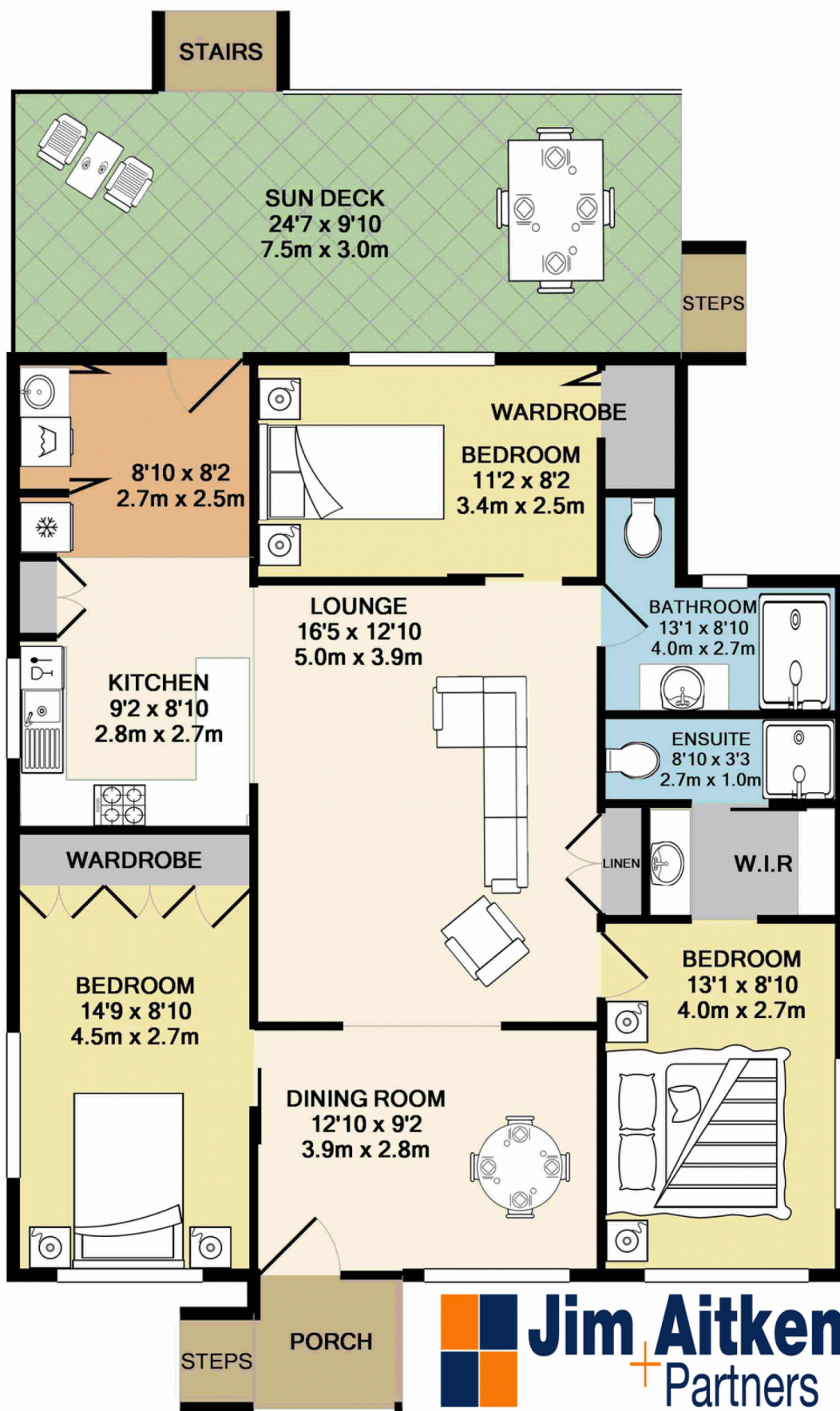
**Type** : House  
**Land Size** : 697 sqm  
**View** : <https://www.aitkenre.com.au/8059663>



**Kieran Flanagan**  
 02 4739 1111

[For full version visit the website](https://www.aitkenre.com.au)

<https://www.aitkenre.com.au>



Whilst every attempt has been made to ensure the accuracy of the floor plan contained here, measurements of doors, windows, rooms and any other items are approximate and no responsibility is taken for any error, omission, or mis-statement. This plan is for illustrative purposes only and should be used as such by any prospective purchaser. The services, systems and appliances shown have not been tested and no guarantee as to their operability or efficiency can be given  
Made with Metropix ©2017