



## 6 Gregory Terrace Lapstone NSW

4  2  4 

Nestled on the high side of the street in the tightly held suburb of Lapstone, is this superb family home. With plenty of size for the growing family, the floorplan encompasses four bedrooms, two bathrooms, two living areas and a double garage.

- \* Four large bedrooms (three with built ins)
- \* Two bathrooms with en-suite to main
- \* Multiple living rooms
- \* Double garage under main roof with internal access
- \* Stunning panoramic views towards the east
- \* Ducted air conditioning throughout
- \* Quiet location walk to station

Situated in a highly desirable location and with plenty of

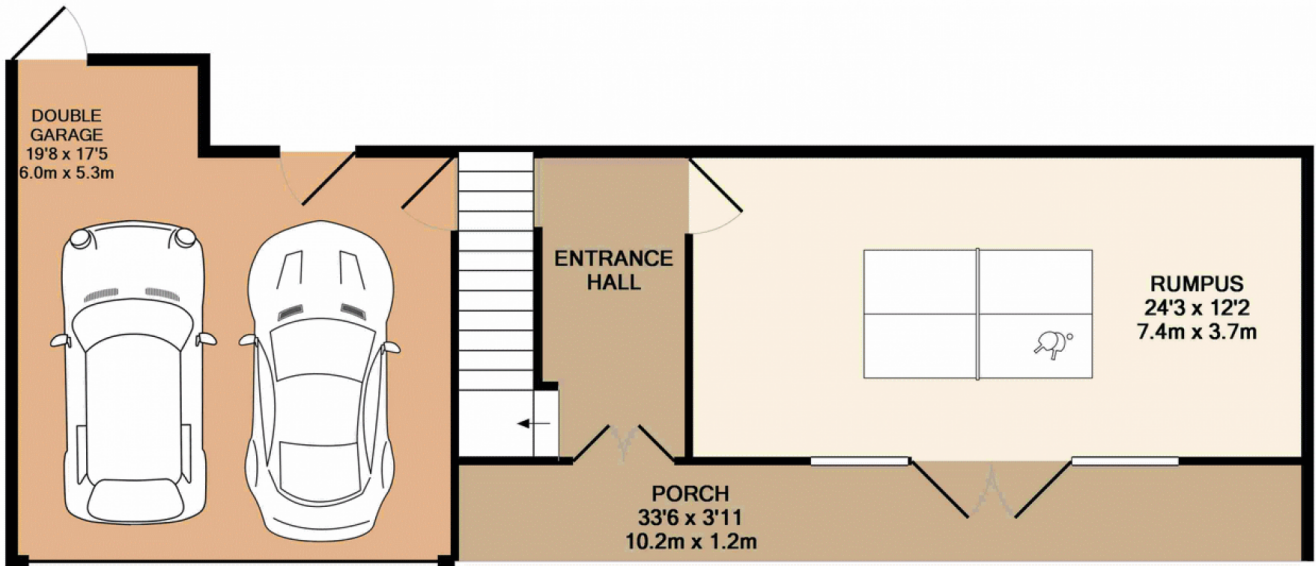
[For full version visit the website](https://www.aitkenre.com.au/8059649)

**Type** : House  
**Land Size** : 619 sqm  
**View** : <https://www.aitkenre.com.au/8059649>

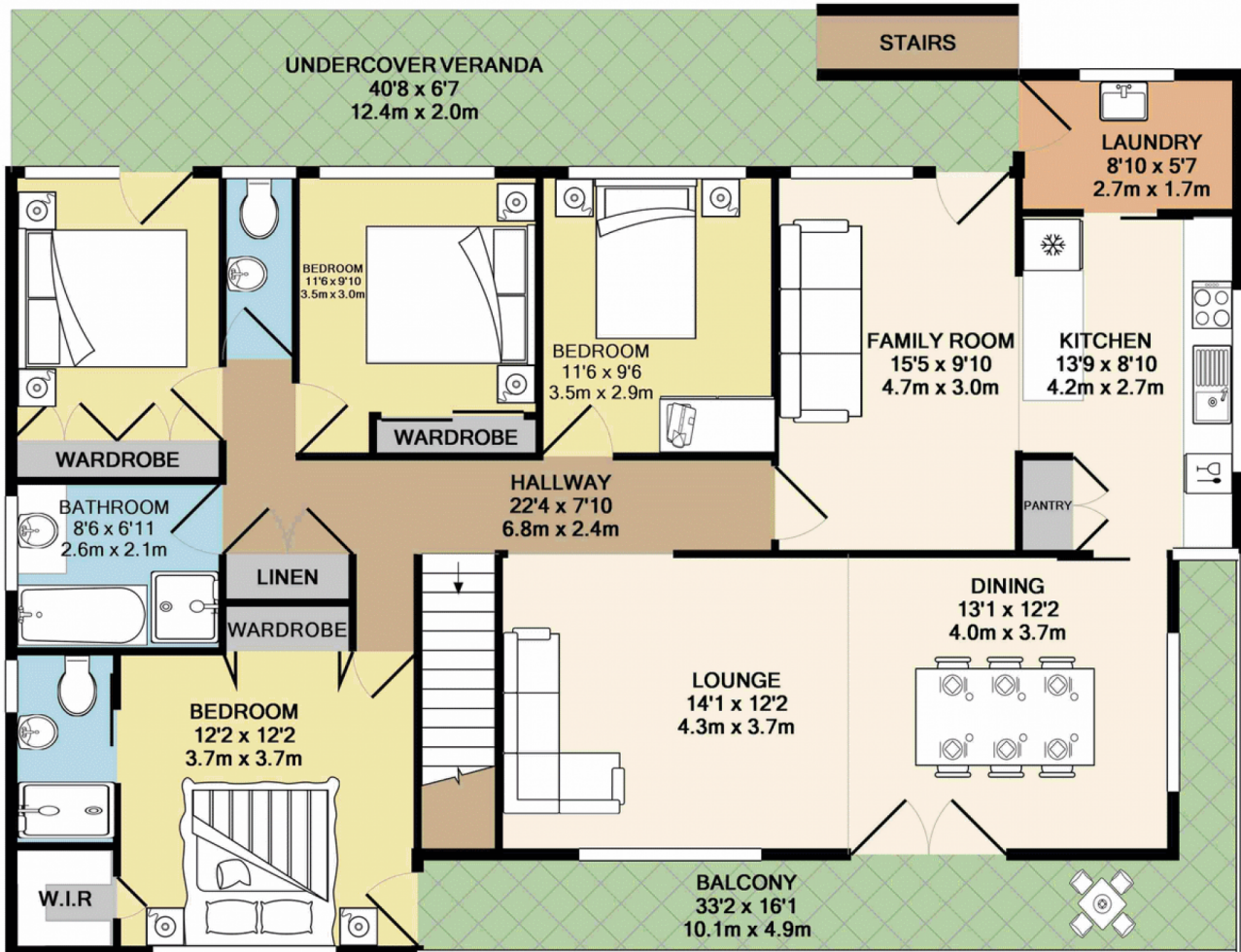


**Kieran Flanagan**  
**02 4739 1111**





**Jim Aitken** ENTRANCE FLOOR  
Partners



GROUND FLOOR

Whilst every attempt has been made to ensure the accuracy of the floor plan contained here, measurements of doors, windows, rooms and any other items are approximate and no responsibility is taken for any error, omission, or mis-statement. This plan is for illustrative purposes only and should be used as such by any prospective purchaser. The services, systems and appliances shown have not been tested and no guarantee as to their operability or efficiency can be given  
Made with Metropix ©2017