






43 Great Western Highway Blaxland NSW

3  2  2 

This beloved family home has been lovingly maintained and includes three generous bedrooms with built-ins, two bathrooms, a beautiful Hamptons Style renovated kitchen overlooking the back entertaining area and the well-established gardens and so much more. The property offers two living areas, one of which flows through from one of the bedrooms and makes the perfect retreat for teenagers, elders or guests.

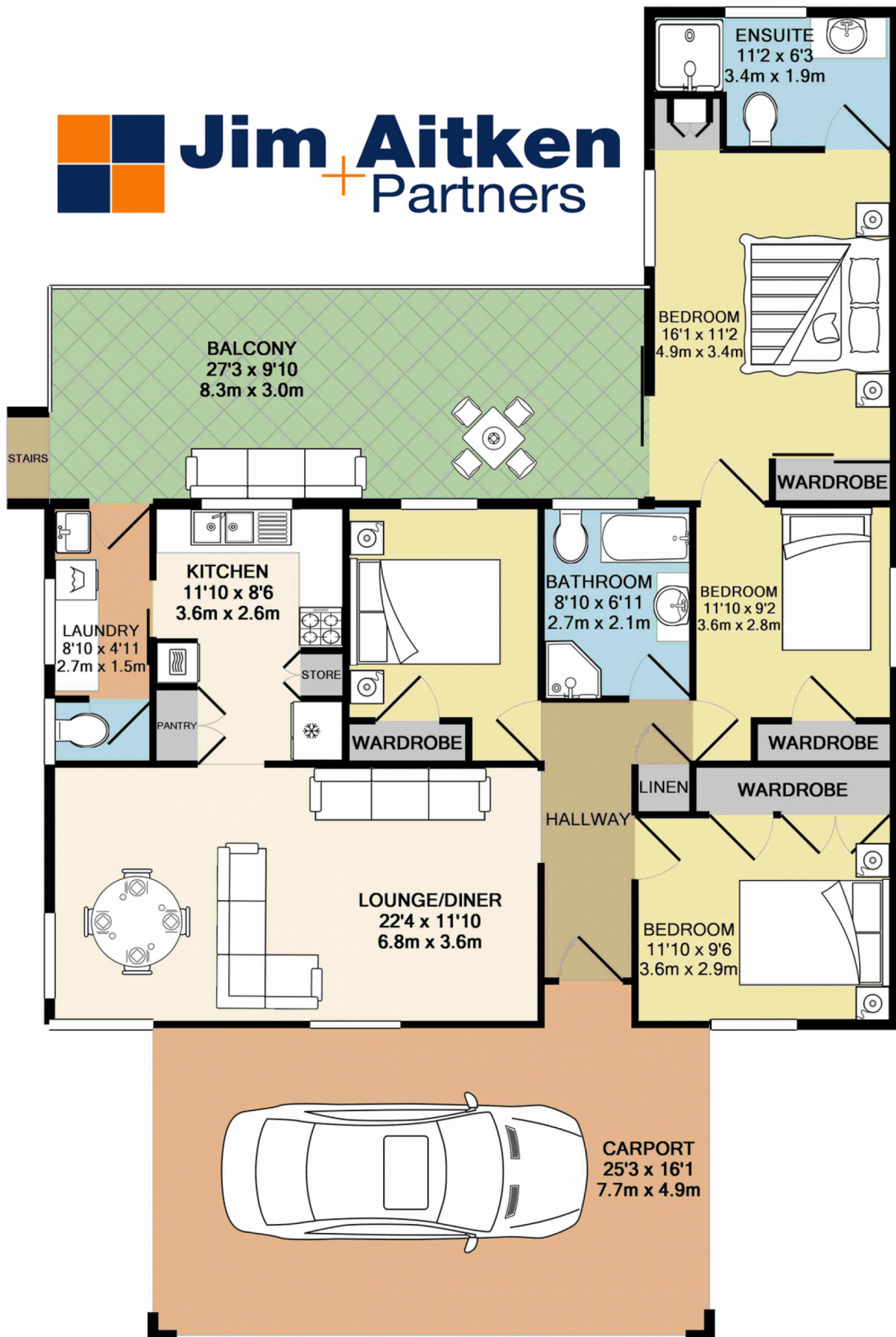
- * Three generous bedrooms
- * Two bathrooms, third toilet
- * Renovated kitchen
- * Multiple living areas
- * Side access
- * Stunning back entertaining area

Type : House
Land Size : 689 sqm
View : <https://www.aitkenre.com.au/8059642>

[For full version visit the website](https://www.aitkenre.com.au)



Jim Aitken
Partners



Whilst every attempt has been made to ensure the accuracy of the floor plan contained here, measurements of doors, windows, rooms and any other items are approximate and no responsibility is taken for any error, omission, or mis-statement. This plan is for illustrative purposes only and should be used as such by any prospective purchaser. The services, systems and appliances shown have not been tested and no guarantee as to their operability or efficiency can be given
Made with Metropix ©2017