



## 20 Matthew Parade Blaxland NSW

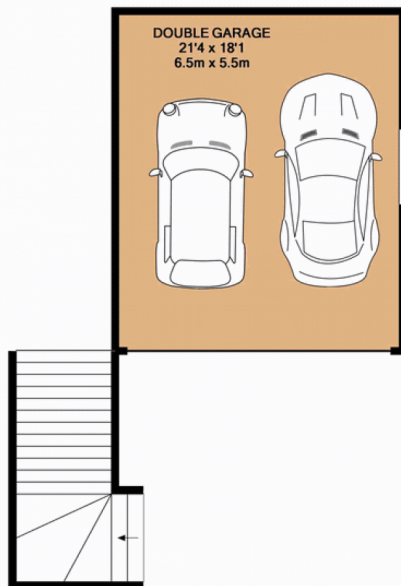
4  2  4 

Offering light and airy interiors, this four-bedroom home does not lack in size or features. From the moment you enter through the front door, you will be impressed with the quality and workmanship that has gone into building this fantastic, double brick, family home. Consisting of three living areas, ensuite and walk in robe to main, built in robes to the rest, decorative combustion fire, bar, ducted air conditioning (two units for different zones), ducted vacuum and sweeping system, timber kitchen with stainless steel appliances, polished timber floors and downlights throughout. Outside offers plenty of off road parking, a double garage and is perfect for the family that loves to entertain, with barbecue area and private deck, above ground pool and still plenty of yard for the kids or beloved pet.

**Type** : House  
**Land Size** : 1046 sqm  
**View** : <https://www.aitkenre.com.au/8059635>

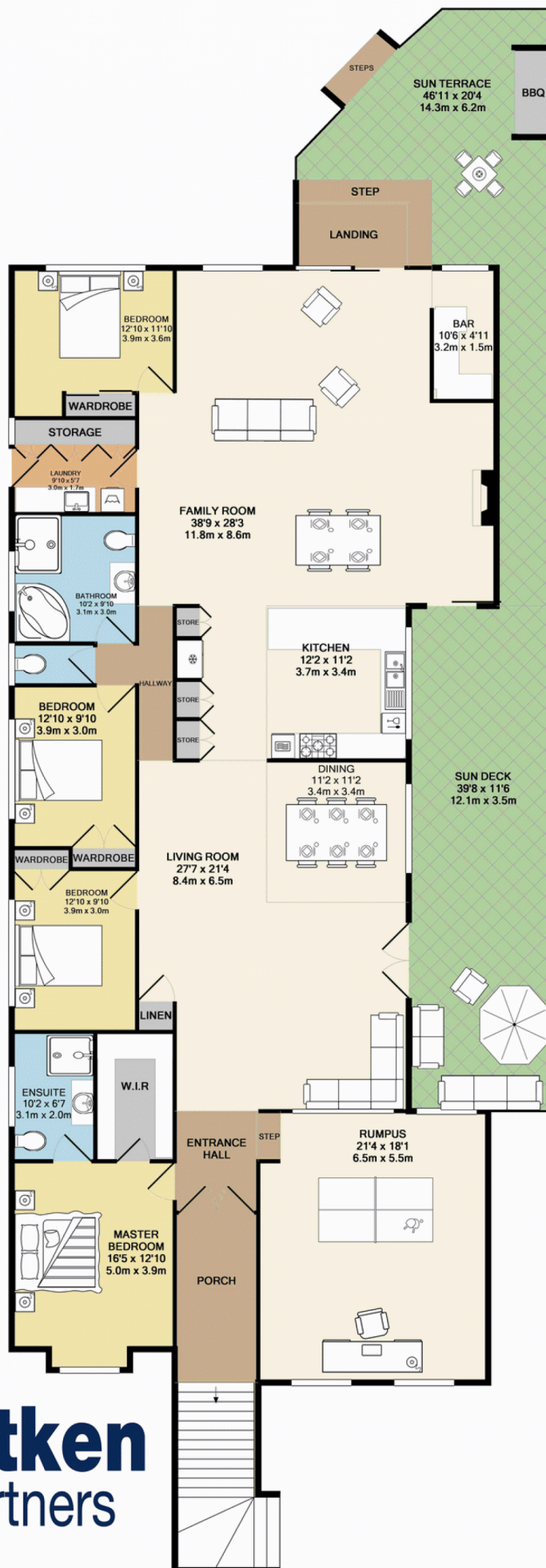
[For full version visit the website](https://www.aitkenre.com.au/8059635)





GROUND FLOOR

Whilst every attempt has been made to ensure the accuracy of the floor plan contained here, measurements of doors, windows, rooms and any other items are approximate and no responsibility is taken for any error, omission, or mis-statement. This plan is for illustrative purposes only and should be used as such by any prospective purchaser. The services, systems and appliances shown have not been tested and no guarantee as to their operability or efficiency can be given  
Made with Metropix ©2016



1ST FLOOR