






6 Moril Avenue Mount Riverview NSW

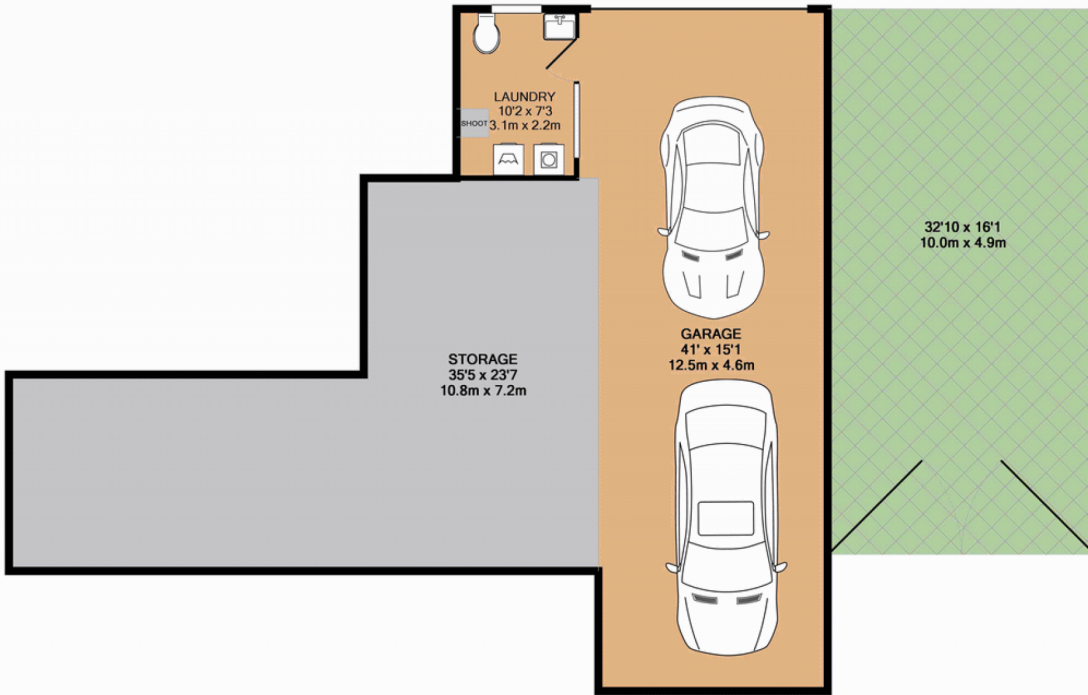
4  2  8 

Enjoy the superb lifestyle on offer with this outstanding family home. With too many inclusions to list, just some of the features on offer are; four generously sized bedrooms, ensuite to main, new kitchen, light filled interiors split system air conditioning, timber floors, large deck with uninterrupted views of the city, electric gated semicircular drive way, side access leading to beautifully landscaped gardens, stunning in-ground pool, spa with gazebo, garaging for multiple vehicles, workshop and self-contained granny flat that is currently returning \$250.00 per week from a long term tenant.

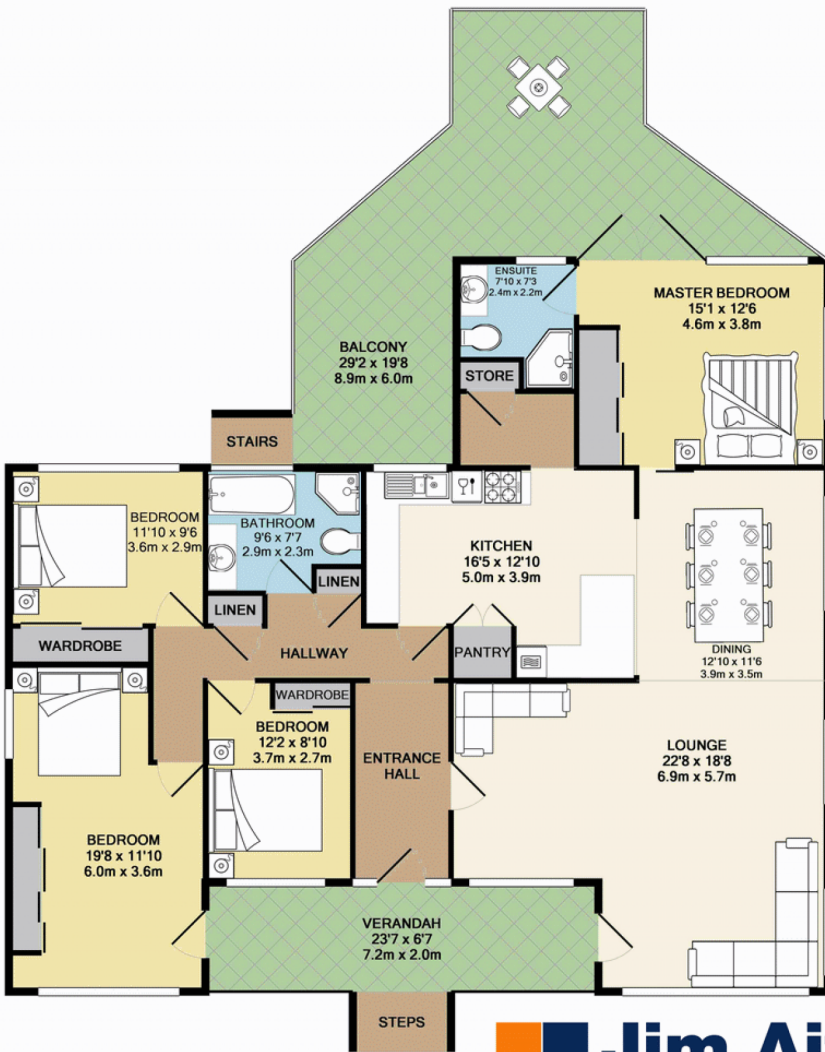
Type : House
Land Size : 1568 sqm
View : <https://www.aitkenre.com.au/8059478>

- *Four bedroom home
- *Uninterrupted city views
- *In-ground pool plus spa

[For full version visit the website](https://www.aitkenre.com.au)



GROUND FLOOR



1ST FLOOR



Whilst every attempt has been made to ensure the accuracy of the floor plan contained here, measurements of doors, windows, rooms and any other items are approximate and no responsibility is taken for any error, omission, or mis-statement. This plan is for illustrative purposes only and should be used as such by any prospective purchaser. The services, systems and appliances shown have not been tested and no guarantee as to their operability or efficiency can be given.
Made with Metropix ©2016