




56 Coughlan Road Blaxland NSW

4  3  4 

Designer built to the absolute highest standards is this stunning family home. With beautiful finishes throughout, built with grand proportions in mind and is complimented by large, light filled living spaces. The property has a myriad of features that will suit the fussiest of buyers.

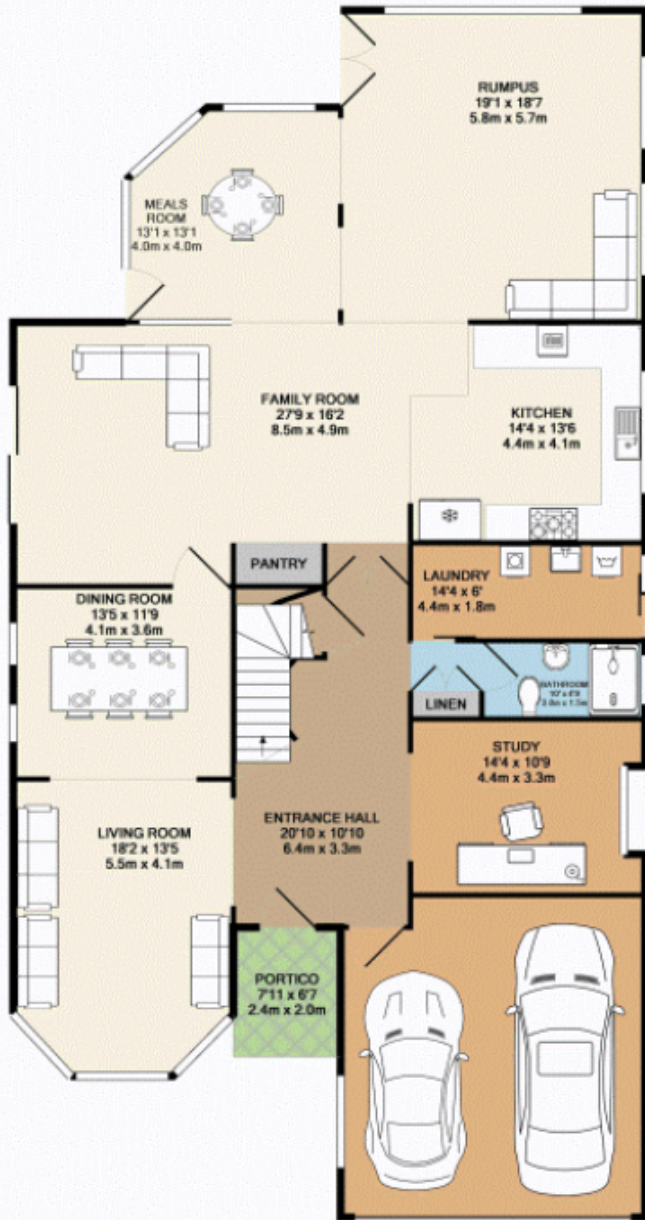
- * Four bedrooms + study
- * Three bathrooms including an en-suite that has to be seen to be believed
- * Three huge living spaces that have an abundance of natural light
- * Impressive entry foyer that leads to the upstairs bedrooms
- * Large double garage with internal access
- * Entertaining area and a sparkling in-ground pool

Type : House
Land Size : 991 sqm
View : <https://www.aitkenre.com.au/8059464>

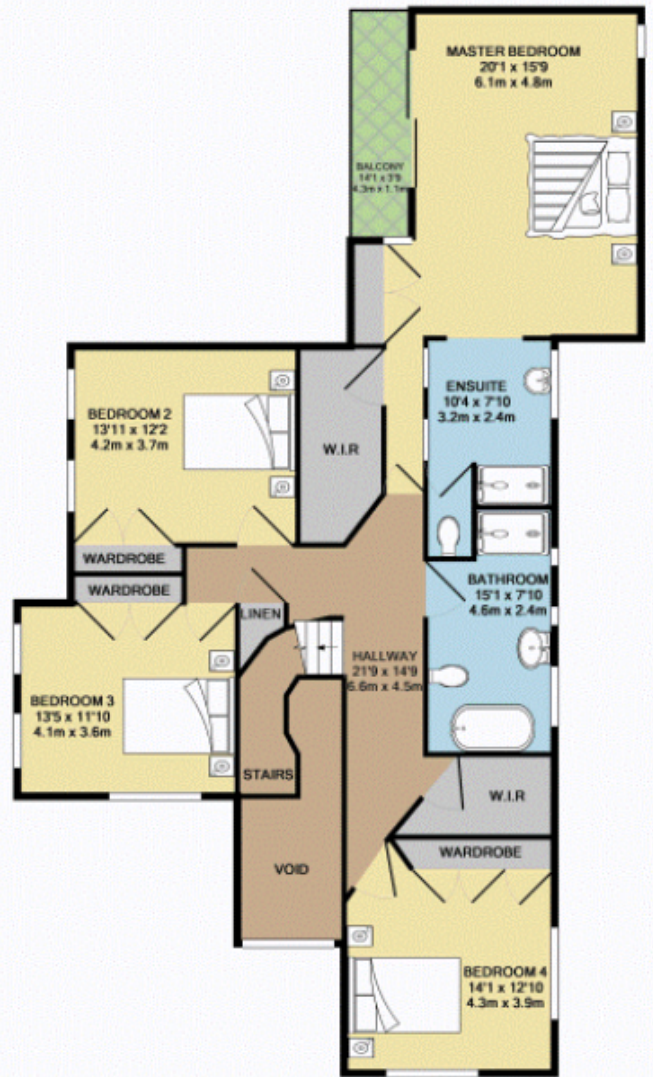


Kieran Flanagan
02 4739 1111

[For full version visit the website](https://www.aitkenre.com.au)



GROUND FLOOR
APPROX. FLOOR
AREA 2375 SQ.FT.
(220.6 SQ.M.)



1ST FLOOR
APPROX. FLOOR
AREA 1437 SQ.FT.
(133.5 SQ.M.)



TOTAL APPROX. FLOOR AREA 3812 SQ.FT. (354.1 SQ.M.)

Whilst every attempt has been made to ensure the accuracy of the floor plan contained here, measurements of doors, windows, rooms and any other items are approximate and no responsibility is taken for any error, omission, or mis-statement. This plan is for illustrative purposes only and should be used as such by any prospective purchaser. The services, systems and appliances shown have not been listed and no guarantee as to their operability or efficiency can be given.
Made with Metropix ©2015