



6 Curvers Drive Mount Riverview NSW

3  2  4 

Set in a beautiful pocket of Mount Riverview, this one will tick all the boxes. Set on an approximate 1805m2 block with stunning bush outlook, this location is set amongst peace and tranquillity. This is a family home with plenty of size, space, warmth and character.

- * Three bedrooms
- * Two bathrooms
- * Large detached garage
- * Two good size living areas with flexible layout
- * Beautiful 1805m2 bushland block
- * Gorgeous, quiet, tree lined street in handy location
- * Three water tanks

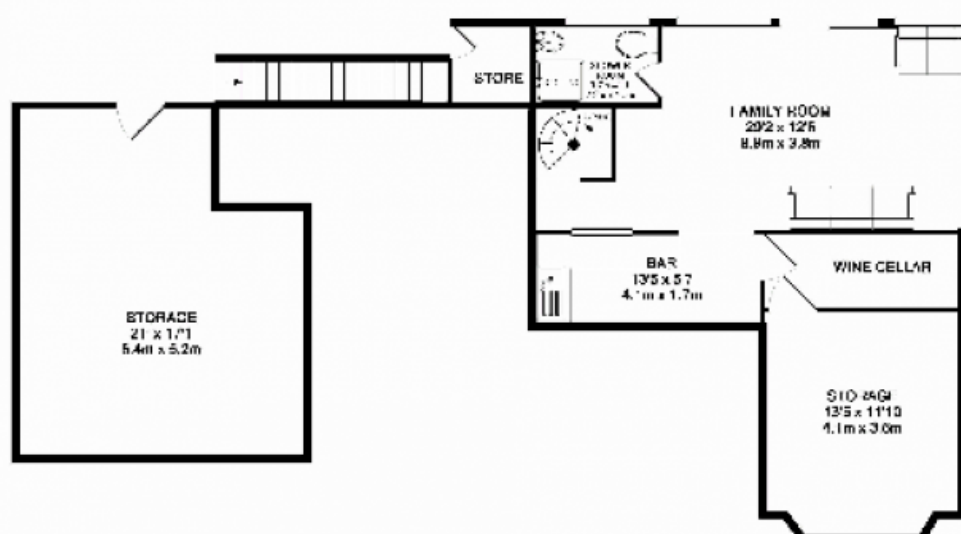
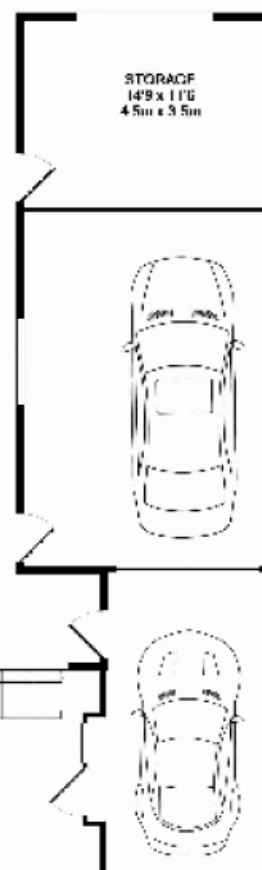
A large family home in a perfect location, this is becoming a

[For full version visit the website](https://www.aitkenre.com.au/8059418)

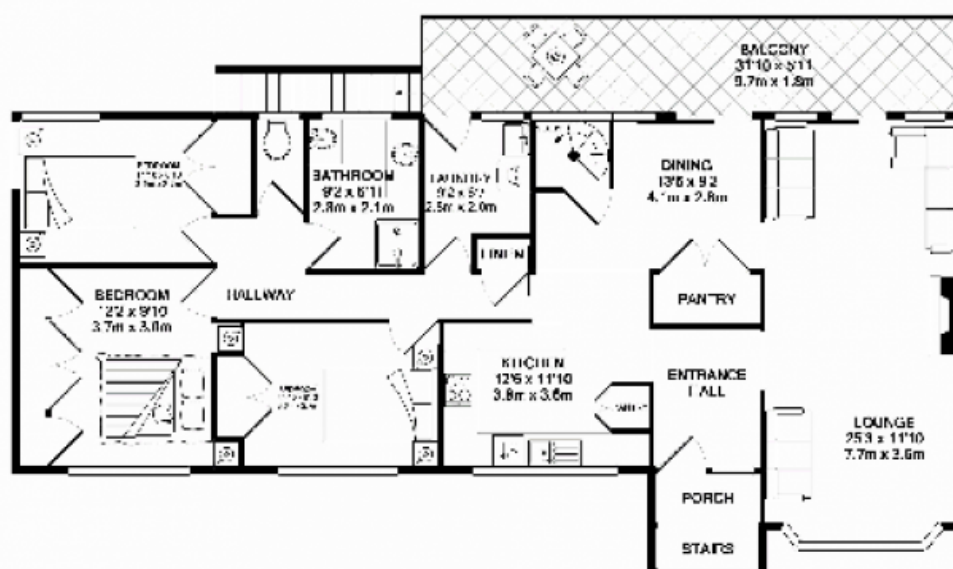
Type : House
Land Size : 1805 sqm
View : <https://www.aitkenre.com.au/8059418>



Kieran Flanagan
02 4739 1111



GROUND FLOOR



1ST FLOOR

Abstract This paper presents a new approach to the design of a control system for a nonlinear system. The system is first transformed into a linear system by using a nonlinear transformation. The linear system is then controlled by a linear controller. The control signal is transformed back to the original system by using the inverse transformation. The resulting control signal is then used to control the original system. The proposed method is applied to a nonlinear system and the results are compared with those of a conventional method. The results show that the proposed method is more effective than the conventional method.