






33B Winnicoopa Road Blaxland NSW

4  2  4 

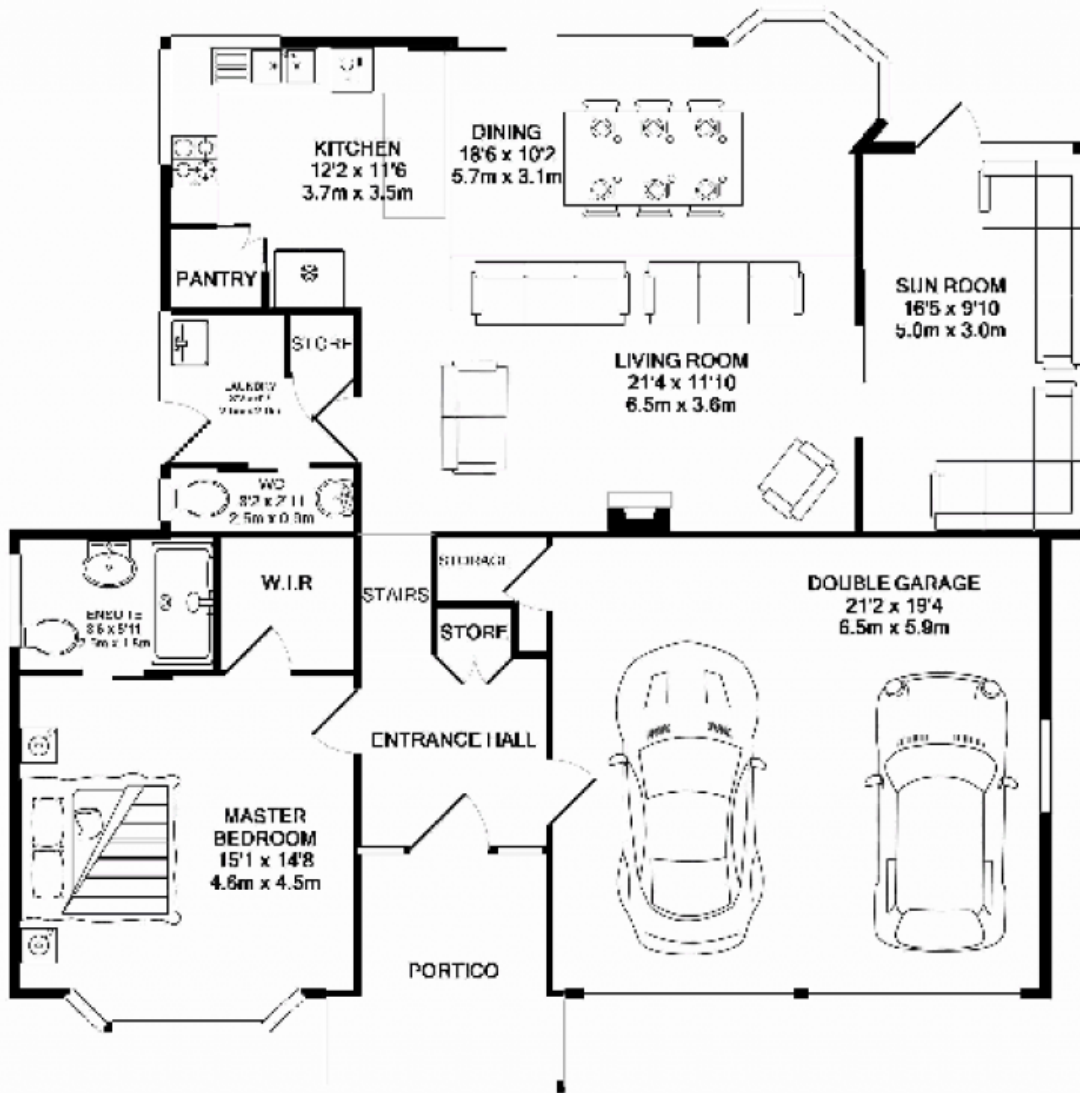
This well appointed executive style home is ideally suited for entertaining. It has a designer kitchen overlooking the open plan dining and lounge area, and an attached solarium style sunroom.

Type : House
Land Size : 1309 sqm
View : <https://www.aitkenre.com.au/8059402>

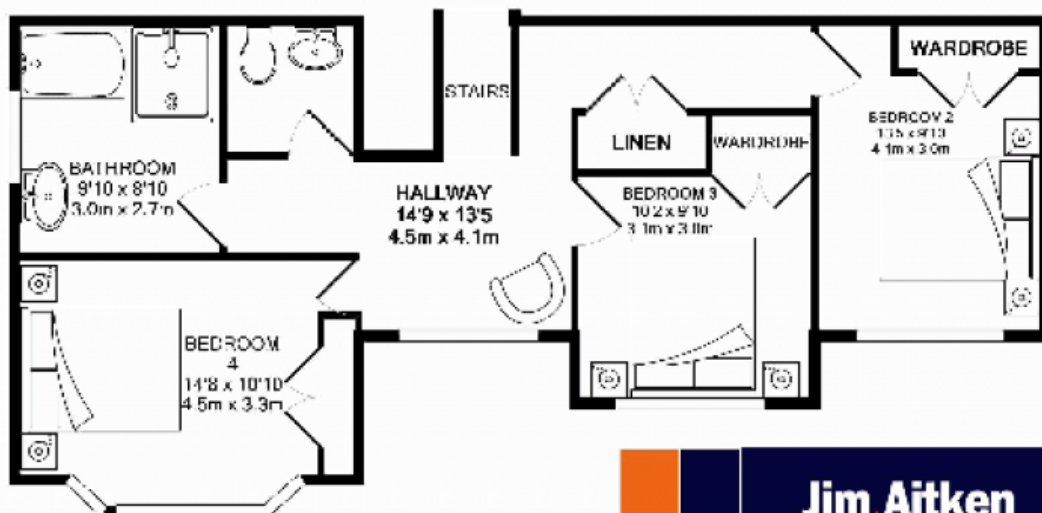
Outside, you have a perfectly peaceful bush garden with pockets of shade and sun, numerous entertaining nooks, gazebo, and a gorgeous natural brook cascade water feature to complete the ideal setting.

- *Tri level spacious home
- *Four bedrooms, Built Ins and Walk in Robe
- *Main Bathroom, Ensuite and Powder Room
- *Ducted Air Conditioning and Vacuum
- *Double Garage, Plenty of Storage

[For full version visit the website](https://www.aitkenre.com.au)



GROUND FLOOR



1ST FLOOR



Whilst every attempt has been made to ensure the accuracy of the floor plan, careful checks, measurements of doors, windows, rooms and any other items are appreciated and no responsibility is taken for any error, omission or mis-statement. This plan is for illustrative purposes only and should be used as such by any prospective purchaser. The services, systems and appliances shown should be seen, tested and fully described and not accepted as a condition of sale for a sale. Video with Vetspro 620-4