



88 Emu Plains Road Mount Riverview NSW

4 🚗 2 🚚 9 🚗

If you're looking for a peaceful home surrounded by nature and with stunning views over the plains this is the home for you. The home's layout opens up so many options; immaculately kept and tastefully decorated this home offers spacious bedrooms and ample living areas. Storage is never a problem with built-ins to all bedrooms and dressing room to the main. Externally the home has a paved entertaining area off the main living. The home offers secure undercover parking for four cars and large storage room under the main home. The garden is beautifully developed and the backyard is very useable backing tranquil bushland.

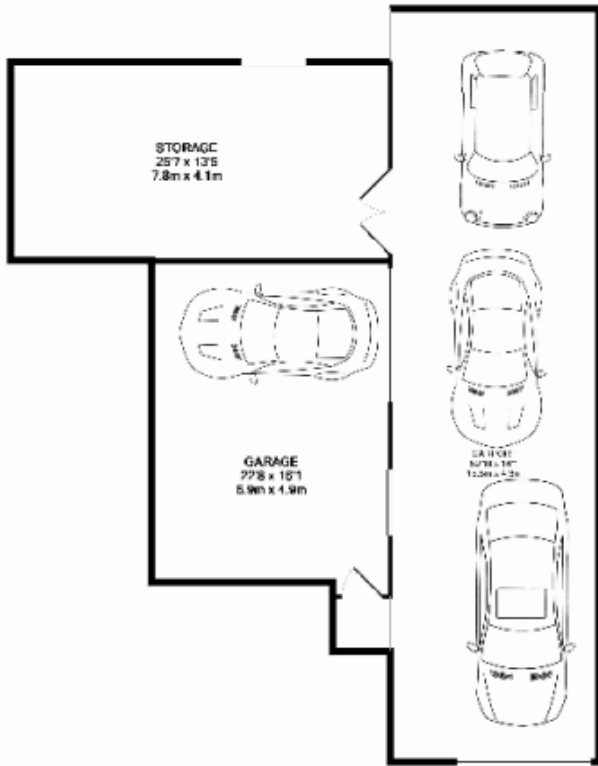
- *Four spacious bedrooms with built-ins and dressing room
- *Three separate living areas

Type : House
Land Size : 799.3 sqm
View : <https://www.aitkenre.com.au/8059398>

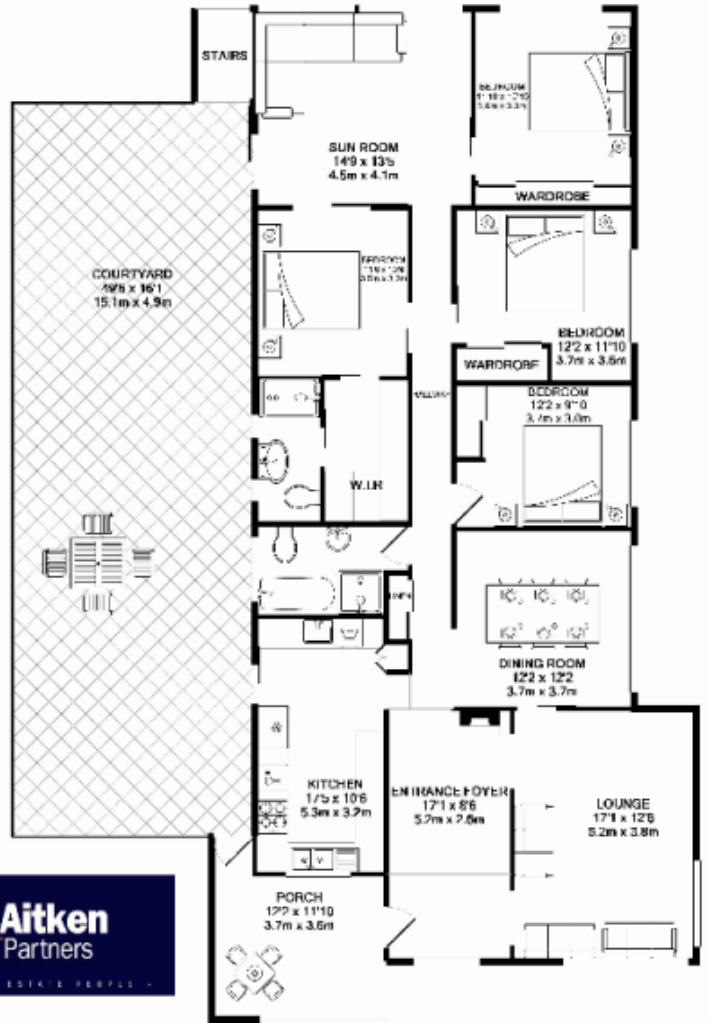


Kieran Flanagan
02 4739 1111

[For full version visit the website](https://www.aitkenre.com.au)



GROUND FLOOR



1ST FLOOR

On a residential development a series of structures of the type shown in this plan are shown in plan, elevation, section and perspective views. The drawings are intended to show the general appearance of the proposed development and are not to be taken as a guarantee of any particular details. The drawings are prepared on the basis of the information provided to the architect by the client and are not to be taken as a guarantee of any particular details. The drawings are prepared on the basis of the information provided to the architect by the client and are not to be taken as a guarantee of any particular details.

