






11 Nightingale Drive Blaxland NSW

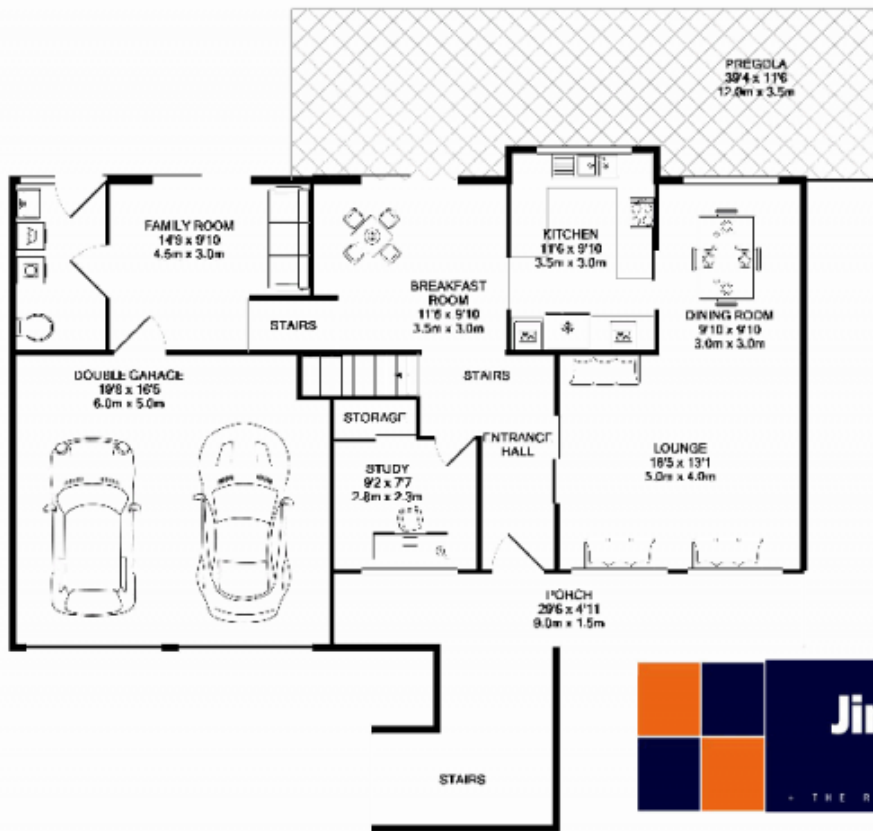
4  2  4 

Situated in a peaceful cul-de-sac, this split level family home offers: four bedrooms, built ins to all, ensuite to main, sunken lounge room, separate dining area, meals area off timber kitchen and a great sized second living area. There is also a third toilet, ducted air and alarm. For the entertainers, outside you will find a huge undercover entertaining area, complete with build in barbeque which overlooks an enormous fenced yard. To complete the package you have a double lock up garage and side access.

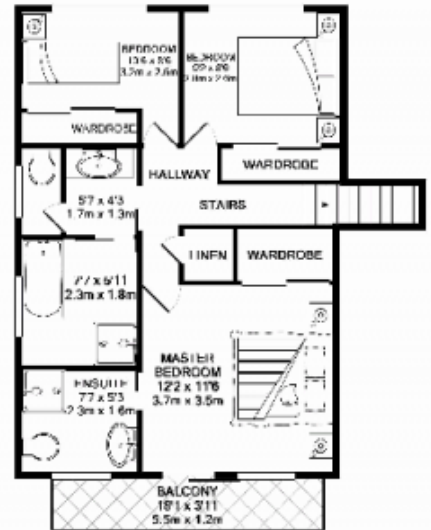
Type : House
Land Size : 955.2 sqm
View : <https://www.aitkenre.com.au/8059369>

- *Split level design with four bedrooms
- *Built ins to all, ensuite to main
- *Multiple living areas
- *Alarm and ducted air conditioning

[For full version visit the website](https://www.aitkenre.com.au)



GROUND FLOOR



1ST FLOOR



With every step we take towards the future of real estate, we are committed to providing the highest quality of service to our clients. We are proud to be a part of the real estate industry and to be recognized as one of the top real estate firms in the world. We are committed to providing the highest quality of service to our clients and to being recognized as one of the top real estate firms in the world. We are committed to providing the highest quality of service to our clients and to being recognized as one of the top real estate firms in the world.