






### 5 Grandis Place Kingswood NSW

3  2  4 

Discover your dream home in a tranquil cul-de-sac within a popular suburb, renowned for its proximity to Nepean Hospital and the medical precinct, the University, the Train Station, and Penrith's bustling central business district.

**Type** : House  
**Land Size** : 923 sqm  
**View** : <https://www.aitkenre.com.au/8059026>

This stunning property offers expansive living with large proportions throughout the top floor, perfect for family living and entertaining. The versatile lower level is ideal for working from home or unwinding in your private retreat, complete with its own bathroom for ultimate convenience.



**Andrew Lia**  
02 4735 2121

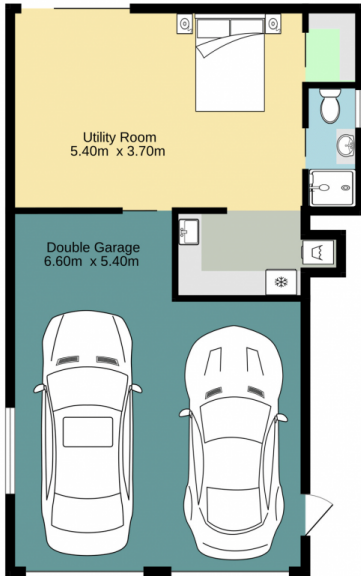


**Richard Stewart**  
02 4735 2121

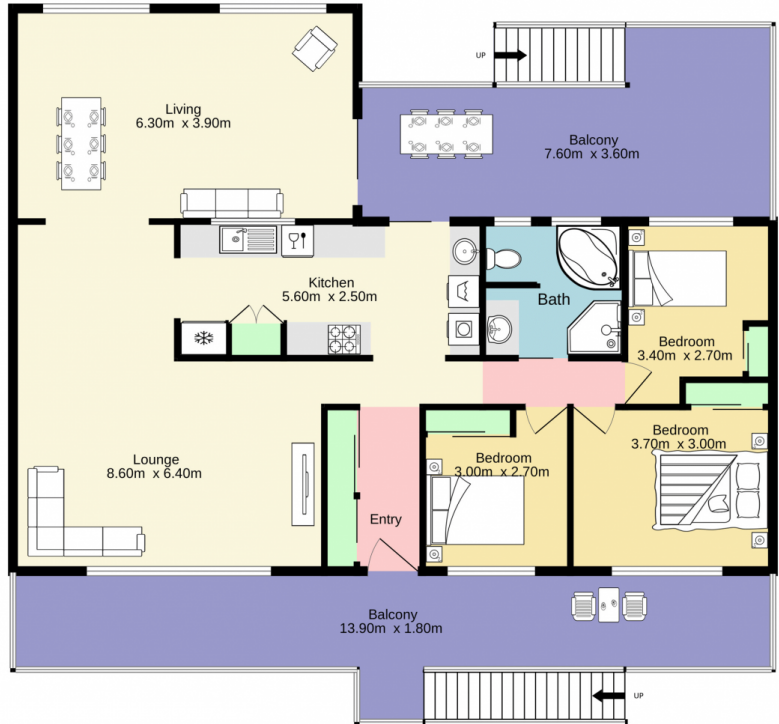
The generous block easily accommodates an in-ground pool, the rear yard accessible through practical side access, making it perfect for storing vehicles, trailers and caravans.

[For full version visit the website](https://www.aitkenre.com.au)

Ground floor  
59.8 sq.m. approx.



First floor  
113.4 sq.m. approx.



TOTAL FLOOR AREA : 173.2 sq.m. approx.

Whilst every attempt has been made to ensure the accuracy of the floorplan contained here, measurements of doors, windows, rooms and any other items are approximate and no responsibility is taken for any error, omission or mis-statement. This plan is for illustrative purposes only and should be used as such by any prospective purchaser. The services, systems and appliances shown have not been tested and no guarantee as to their operability or efficiency can be given.  
Made with Metropix ©2024

